

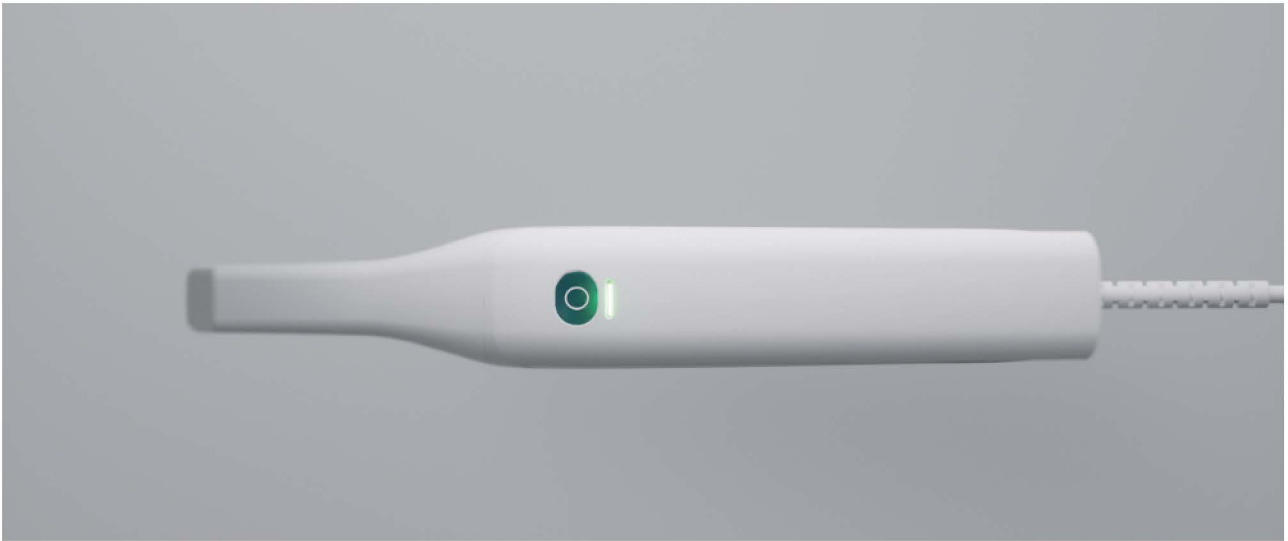
CEDU3D

FULLY DIGITAL PRODUCTION LINE

Professional dental manufacturer

New Intraoral Scanner

High performance and smooth scanning



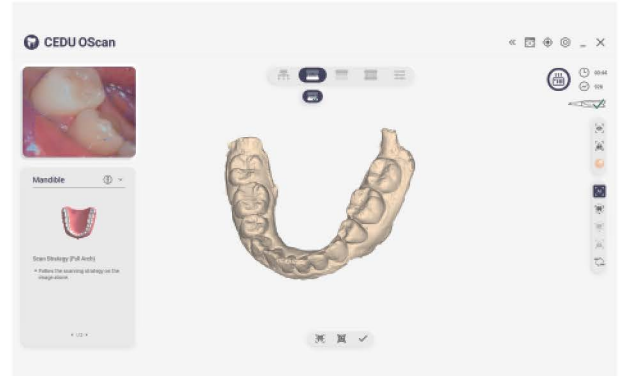
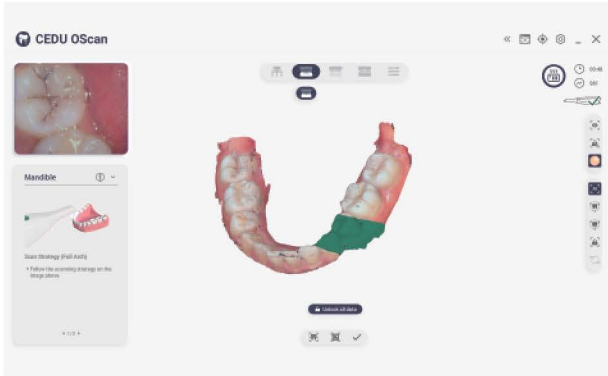
Intraoral Scanner

A high-end dental digital scanner specially developed for the dental industry, with advanced dynamic 3D scanning technology, it provides high speed imaging, real color, and higher scanning accuracy for users.



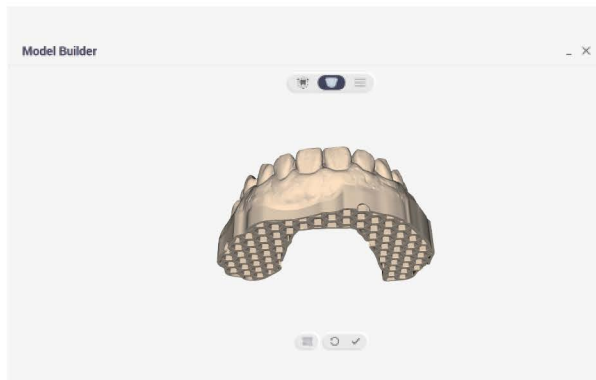
Complete Scanning Function

CEDU3D has been committed to providing users with a shortcut to oral digitalization, insisting on continuous innovation and improving the patient experience for users



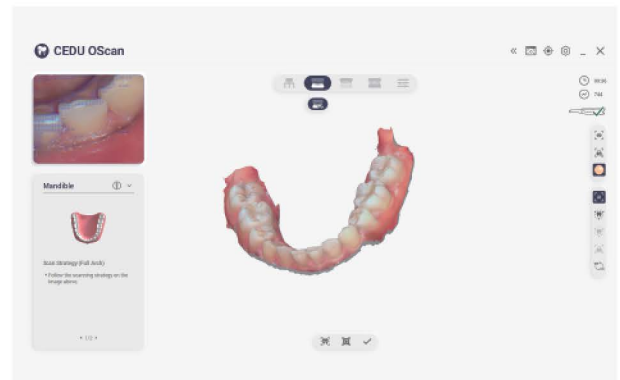
Lock Data

Lock the position of the teeth to prevent data loss and reject excess data interference.



Color Switch

One click color switching and comprehensive inspection of model data.

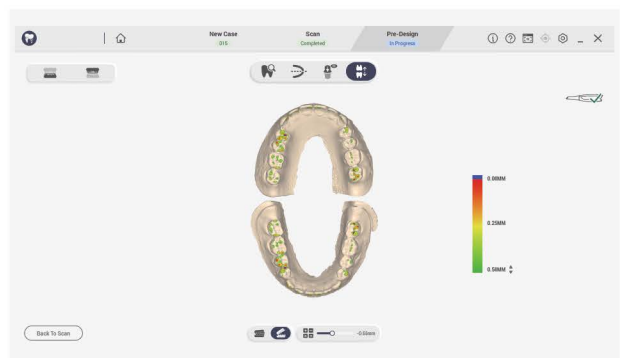
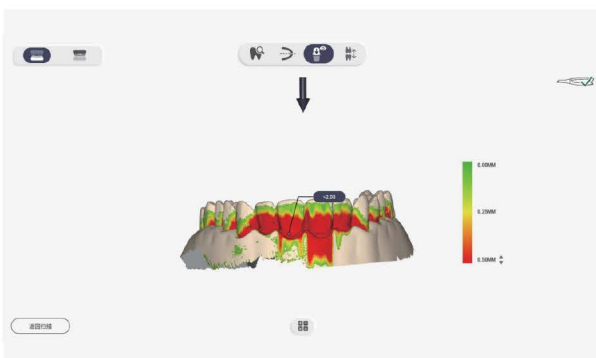


Model Builder

This function intelligently generates a standardized, ready-to-print base for a scanned dental model, creating an integrated digital file for direct 3D printing.

Ai Removal of Soft Tissue

Suitable for edentulous jaws, routine restoration and implantation, and orthodontic cases.

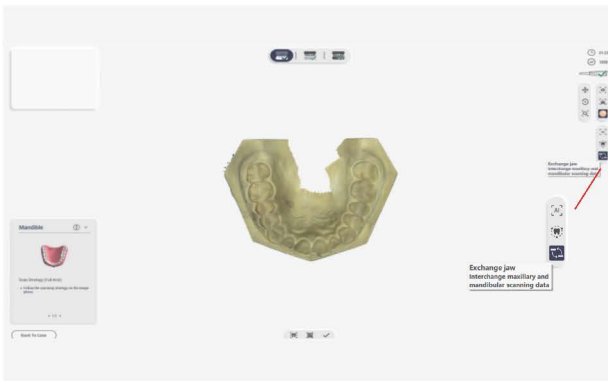


Undercut Detection

Automatically identifies tooth recesses that could block a restoration's placement, ensuring safe and smooth insertion.

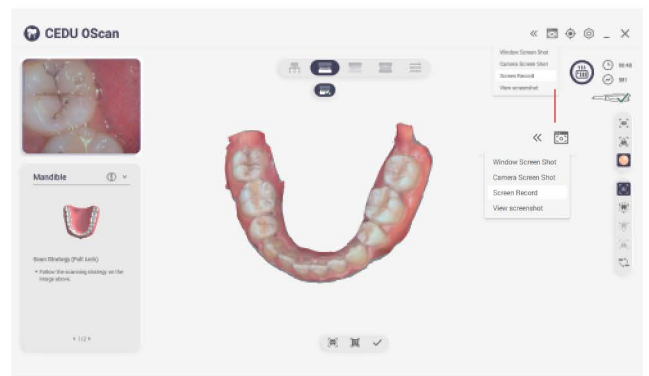
Occlusal Analysis

Simulates and adjusts the bite contact of a restoration to prevent interference and ensure long-term comfort.



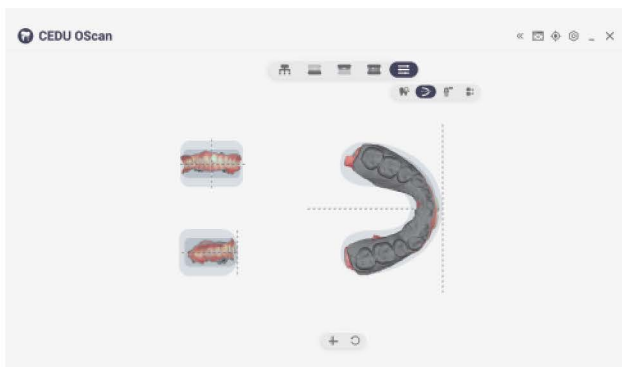
Swapping The Upper And Lower Jaws

After scanning or post processing is completed exchange data of the upper and lower jaws. Suitable for situations where the upper and lower jaw processes are reversed during scanning.



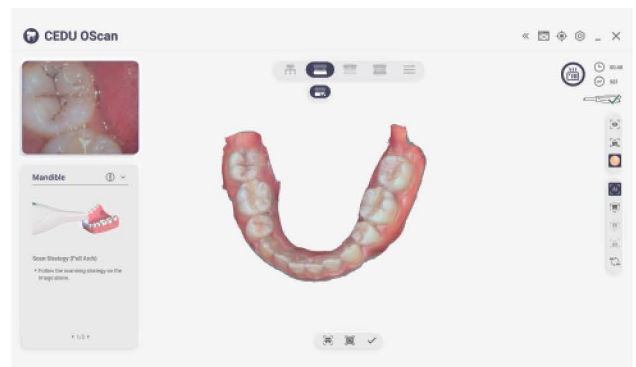
Comes With Built In Screen Recording

Screen recording: Record the scanning process; Screenshot: capture data measurement results. etc;



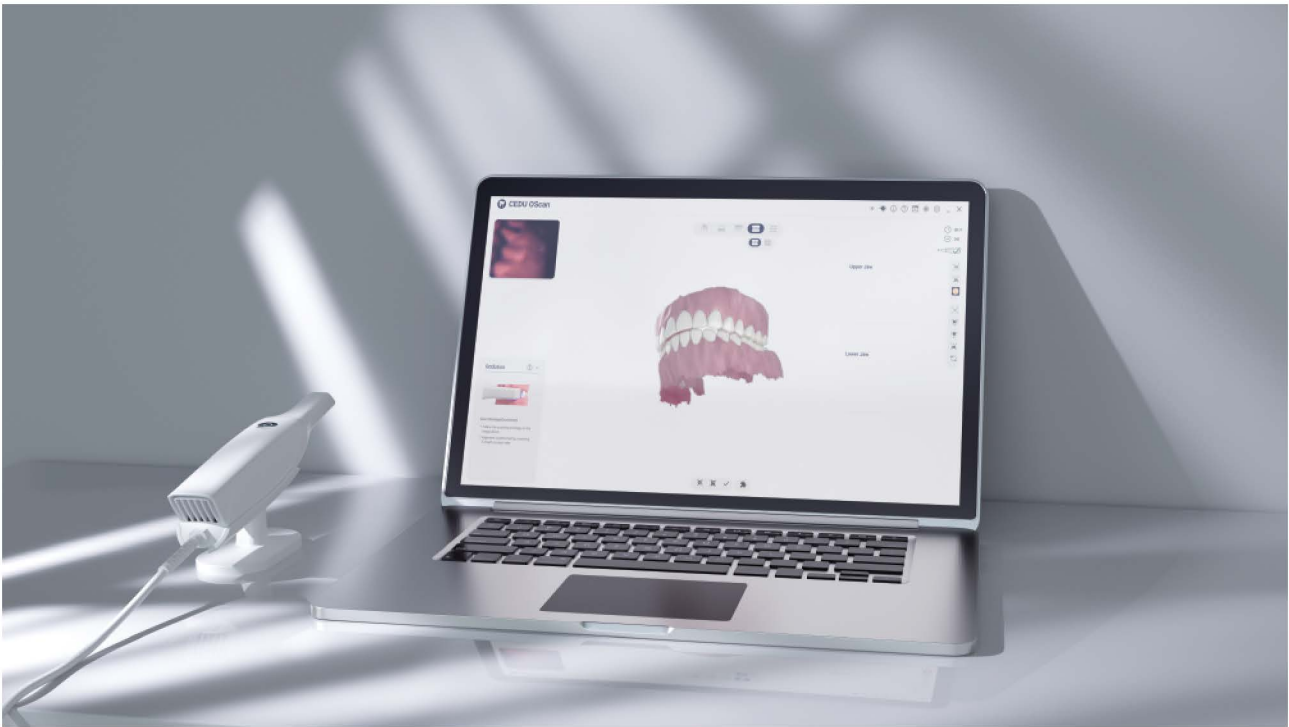
Adjusting Coordinates

Used for manually adjusting the reference coordinate system of the teeth and jaw, adjusting the tooth and jaw data to a unified standard reference coordinate system.



Scanning Indication

You can click in the image window as needed to activate scanning instructions and guide customers to convert the unshanned area to multiple angles for scanning, in order to obtain high quality data.



System Configuration

Please check if your configuration meets the minimal recommended configuration.

	Laptop computer	Desktop computer
CPU	Intel Core 12th generation i7 or above	
RAM	16GB	
GPU	NVIDIA Geforce RTX 3060 and above 8GB	
Operating System	Windows 10 or Windows 11, 64-bit Professional edition	

OScan	Parameter
Scanning technique	Structured light imaging technology
Product size (L*W*H)	290mm*45mm*40mm
Product weight	260g
Scan head size (L*W*H)	45mm*35mm*100mm
Single scan range	14*14mm
Scan depth	-2mm-20mm
3D data format	STL, PLY, OBJ, support customized encrypted format files
Interface	USB 3.0
Full port scanning time	<2 min
Light source	Blue LED
Frame rate	30FPS

Packing Specifications



Outer Packing Box



Inner Packing Box



Oral Scanner



Color Calibration / USB



Power Adapter



Equipment Bracket



Calibration Tool



USB Cable



Scanner Tip*4

DENTAL PROFESSIONAL SCANNER



Dental Desktop Scanner

Economic, Efficiency, and Elegant. Combining these three features makes it easy to integrate our desktop scanners into your workflow.

QScan



STABLE

Dual arm stabilizes scanner structure and minimizes motor vibration during scanning



CAMERA

Optimized 3.0MP industrial camera with 2/3 inch camera chip and 5.3um chio pixel, better details shown



HEAT DISSIPATION

Dual radiator design to protect projector, enabling longer projector lifetime



USB

Stable and fast data transfer with USB 3.0 interface



All-In-One

This new all-in-one scan method allows scan of quadrant models and dies at the same time, which largely simplifies the scan process and improve the scan efficiency by almost 50%.

Conventional

4 Steps



1. Upper



2. Lower



3. Die



4. Bite

All-in-one

2 Steps



1. Bite



2. All-in-one

QScan Pro S

- Upgrade Scanning Speed 30%
- Color Texture
- A brand-new Mechanical Structure

STABLE

Swing arm upgrade, faster scanning speed, more stable and quieter scanning.

CAMERA

Camera upgrade, 3.7MP*2, faster scanning speed, higher scanning accuracy.

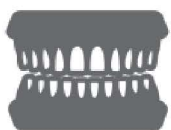


Greatly Speed UP!

QScan Pro S 3d scanner, the speed of the camera and turntable is increased. and the single data can be scanned faster. With the new architecture software version, the fast scanning mode can be started immediately, and the fast scanning experience can be enjoyed, which will help the denture factory to improve quality and efficiency.

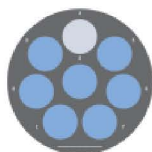
Occlusion

3s



1-8Dies

13s



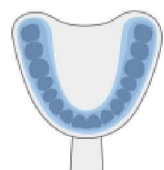
Single Jaw

10s



Impression

12s



Qscan Max

- Ultra-high Accuracy
- Ultra-high Details
- Flexible Workflow
- Backstage Data Processing

CAMERA

The new camera 5.0MP*2 has higher scanning accuracy.



Fine Data, Complete Scanning

QScan Max upgrade further optimizes and improves the 3D scanning ability, and the texture scanning is clearer, the non parting data is more complete, and the implant scanning is simpler, which helps dental technicians to cope with large scale production calmly.

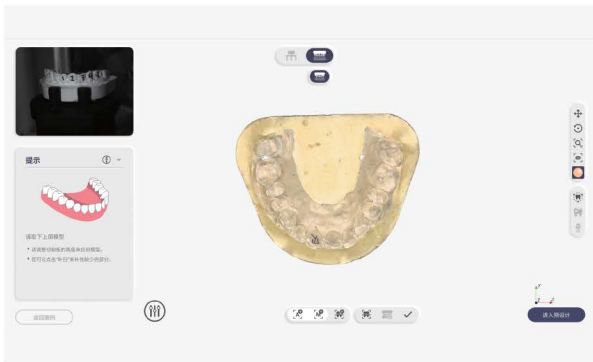
Scan accuracy $\leq 8 \mu\text{m}$



5.0MP*2



Complete Scanning Function



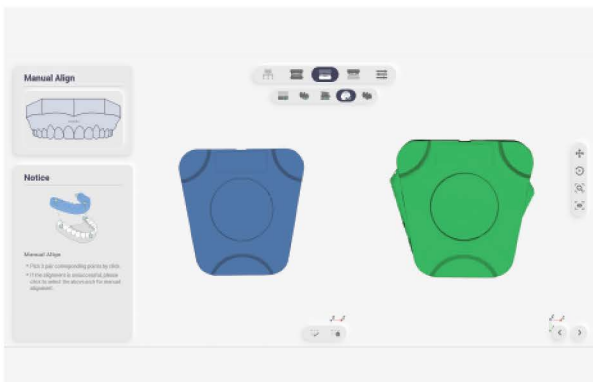
High Precision Texture

Obtain texture data.



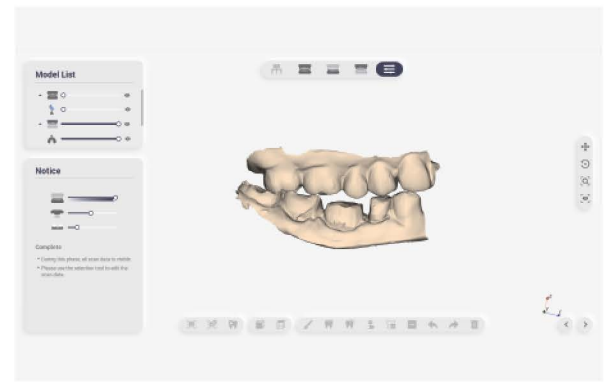
Custom Scanning Steps

You can choose the scanning order yourself more adaptable to your work style and needs.



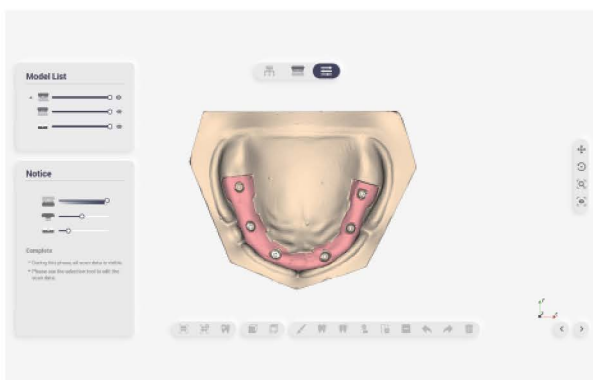
Virtual Articulator Transfer

Can dock with KaVo and Artex racks, using virtual racks without the need for special fixtures, just scan the base to align to the default position.



Bilateral Impression

The impression scanning module can automatically complete complete dual impression scanning, without the need for you to manually reverse the scanning data, to obtain a concise and accurate dual impression data and bite impression data.



Gingival Scan

High precision gum scanning.

Specification Configuration



PC RECOMMENDED CONFIGURATION	3.0MP / 3.7MP	5.0MP
CPU	Intel 8th Generation I5 above	Intel 8th Generation I5 above
GPU	NVIDIA 3060ti-6G and above	NVIDIA 3060-8G and above
RAW	16G	16G
SSD	128G	512G
POWER	550W	550W

Parameter	QScan Pro	QScan Pro S	QScan Max
Resolution of the cameras	3.0mp*2	3.7mp*2	5.0mp*2
Scan area	100*100*75mm	100*100*75mm	100*100*75mm
Scan principle	Three-dimensional structured light	Three-dimensional structured light	Three-dimensional structured light
Size	37*35*45cm	37*35*45cm	37*35*45cm
Weight	5 Kgs	5 Kgs	5 Kgs
Light source	LED Blue Light	LED Blue Light	LED Blue Light
Articulator scan	●	●	●
Accuracy(ISO12836)	10 μm	8 μm	5 μm
Single jaw scan speed	17s	11s	13s
Texture	●	●	●
True color scanning	×	●	●

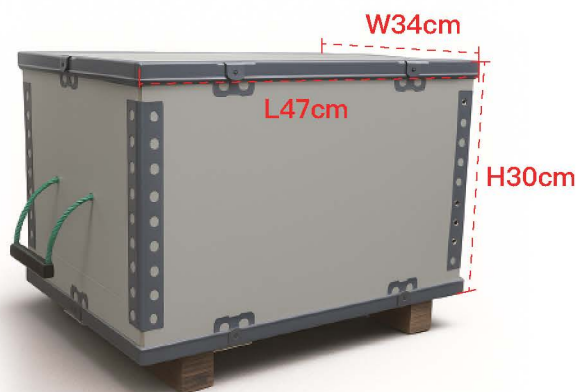
Packing Specifications

Net Weight:

5kg

Gross Weight:

12kg



External Packing Box



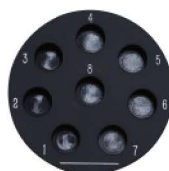
Scanner



Calibration board



Base Block



Die-tray



Full Jaw Fixture Base



Fixture Base*2



All In One Fixture Base



Dental Mould Fixture



Jaw Transfer Block



Impression Clamp



Impression Fixture



Articulator Plate



Software Installation
Package USB Driver



BluTack Plasticine



Power Cord Cable



USB Cable



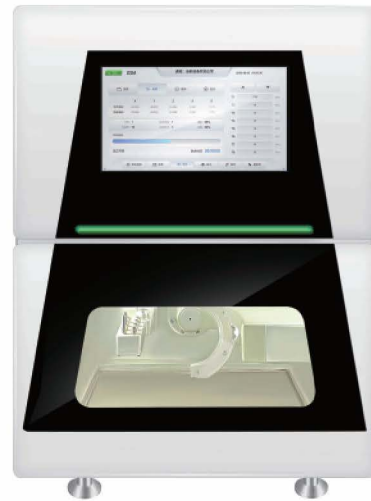
Power Adapter

DENTAL MILLING MACHINE



M5 Five-axis Dry Milling Machine

- Support multiple languages
- Automatic tool changer
- LCD Display

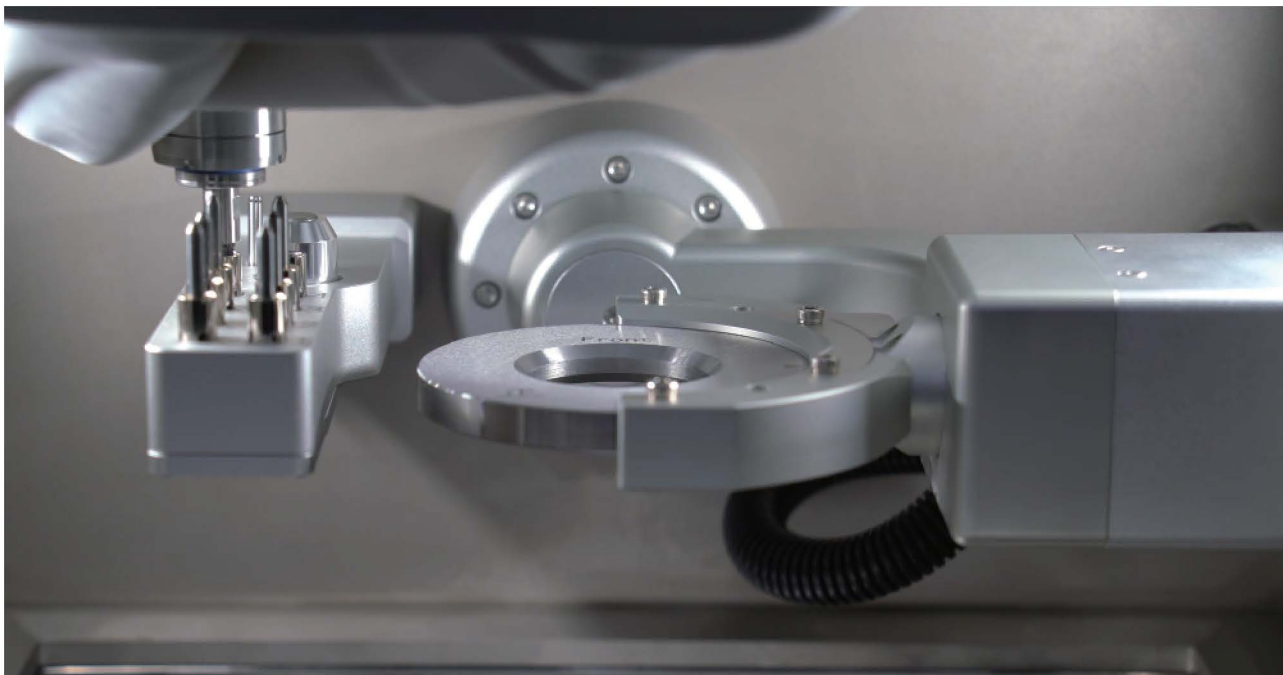


Precision 90° Milling



Five-axis synchronous technology can realize 90 vertical and beautiful dry milling. This solution accurately integrates efficient and real prostheses, ensures consistent high-quality dental prostheses, and provides natural and realistic results for patients.

Auto-Calibration



Automatic calibration simplifies operation and automatically optimizes the accuracy and stability of the machine. This function can reduce milling errors, minimize material waste and improve overall efficiency, so that users can consistently produce high-precision dental restorations with excellent quality and reliability.

Parameter

M5	Parameter	M5	Parameter
Size	456*599*700MM	Electric machinery	Servo motor
Weight	85KG	Processing angle	A $\pm 360^\circ$ B $+35^\circ -35^\circ$
Processing method	Dry milling	Processing materials	Zirconia, PEEK, PMMA, wax, etc
Number of axes	Five axis	Number of cutting tools	7
Pressure	$\geq 0.65\text{MPA}$	Spindle	60000RPM
Power Supply	220V		Air cooling
Maximum output power	1.4KW		4MM clamp head
Repetitive positioning accuracy	$\pm 0.005\text{MM}$		0.45KW

MD5 Electric Spindle Dry Milling Machine

- German motorized spindle
- Automatic tool changer
- Support multiple languages
- Auto-Calibration
- Precision 90° Milling



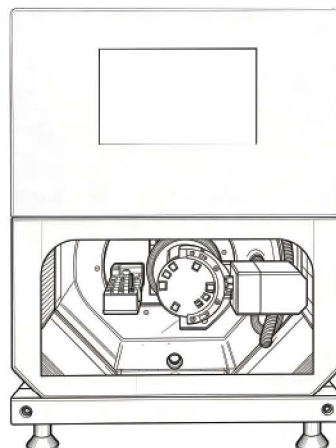
German Motorized Spindle

60,000 rpm high-power spindle delivers reliable performance for complex cases and hard materials.



Single-Piece Casting Frame

Engineered for precision, the solid one-piece frame guarantees 24/7 stable milling, vibration-free operation and flawlessly smooth prosthetic processing.



Wide Material Compatibility

Zirconia, wax, PMMA, PEEK, composite resin, soft metals, and more.



Multi-Language Interface

User-friendly system supports multiple language settings, facilitating easy operation across different regions and user backgrounds.



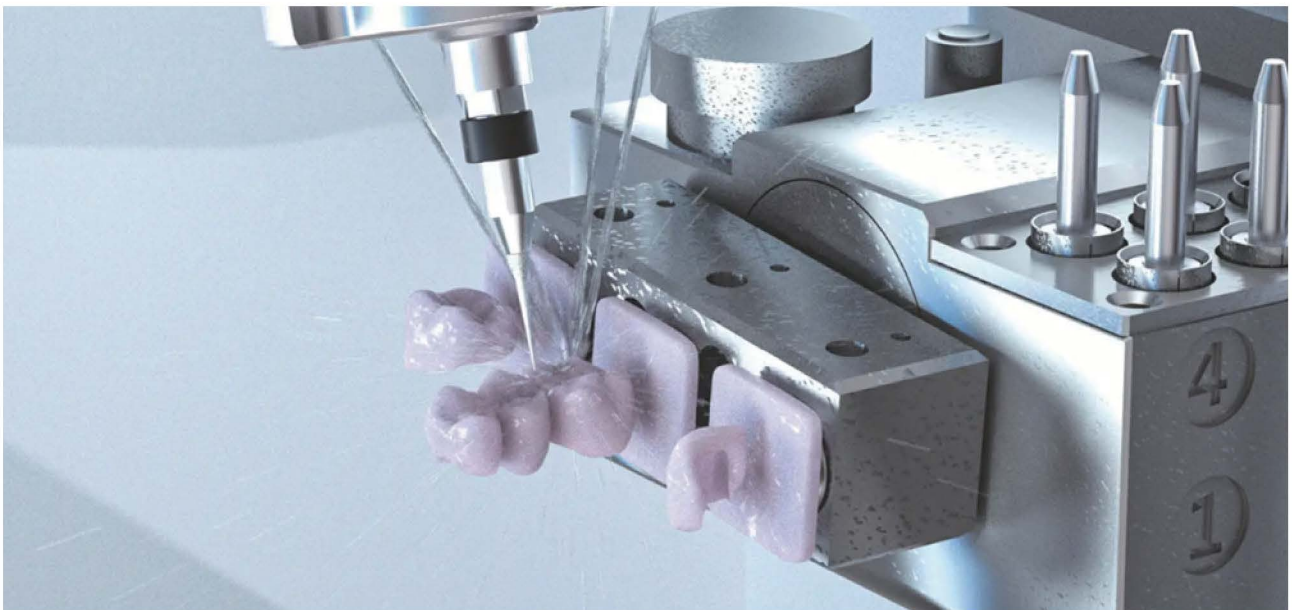
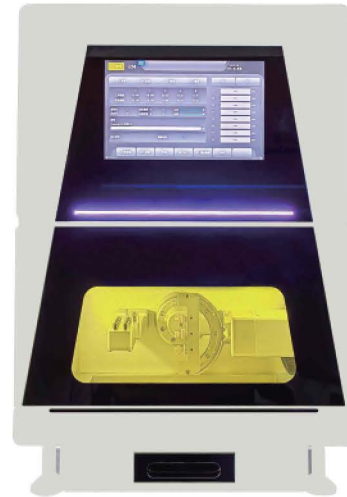
Multi-Software Support

Compatible with WorkNC, Hyperdent, Millbox, and other CAM software.

MD5	Parameter	MD5	Parameter
Size	456*599*700MM	Electric machinery	Servo motor
Weight	85KG	Processing angle	A ±360° B -30° +110°
Processing method	Dry milling	Processing materials	Zirconia, PEEK, PMMA, wax, etc
Number of axes	Five axis	Number of cutting tools	7
Pressure	≥ 0.65MPA	Spindle	60000RPM
Power Supply	220V		Natural cooling
Maximum output power	1.4KW		4MM clamp head
Repetitive positioning accuracy	± 0.005MM		800W

MW5 Five-axis Wet Milling Machine

- Five-axis linkage wet machining
- Automatic tool changer
- Water cooling and heat dissipation



"Wet milling" process is crucial as it prevents overheating, reduces dust, and ensures higher precision and a smoother surface finish on the final restoration. With CAD software, MW5 precisely mills dentures from digital designs, offering greater efficiency, consistency, and quality than traditional methods.

MW5	Parameter	MW5	Parameter
Size	456*599*700MM	Electric machinery	Servo motor
Weight	85KG	Processing angle	A ±360°
Processing method	Wet milling		B +30° +110°
Number of axes	Five axis	Processing materials	Glass ceramic, titanium pillar
Maximum output power	2.6KW	Spindle	60000RPM
Power Supply	220V		Liquid cooling
Repetitive positioning accuracy	± 0.005MM		6MM clamp head
Number of cutting tools	8		1.8KW

MY5 Dry&Wet Integration Five-axis Milling Machine

- Five-axis linkage machining
- Automatic tool changer
- Dry, wet and metal cutting



- Dry and wet milling in one device
- Process zirconia, wax, PMMA, and composite resins, glass ceramics, titanium pillars.
- Stable milling performance with excellent model
- User-friendly interface with automatic mode switching

MY5	Parameter	MY5	Parameter
Size	510*660*710MM	Electric machinery	Servo motor
Weight	110KG	Processing angle	A ±360°
Processing method	Wet&Dry Milling		B -30° +90°
Number of axes	Five axis linkage	Data transmission	USB, Ethernet
Machining precision	≤5μm	Spindle	60000RPM
Rated current frequency	50/60HZ		Liquid-cooling
Compressed air	0.6-0.8MPa		6MM clamp head
Number of cutting tools	8		1.8KW

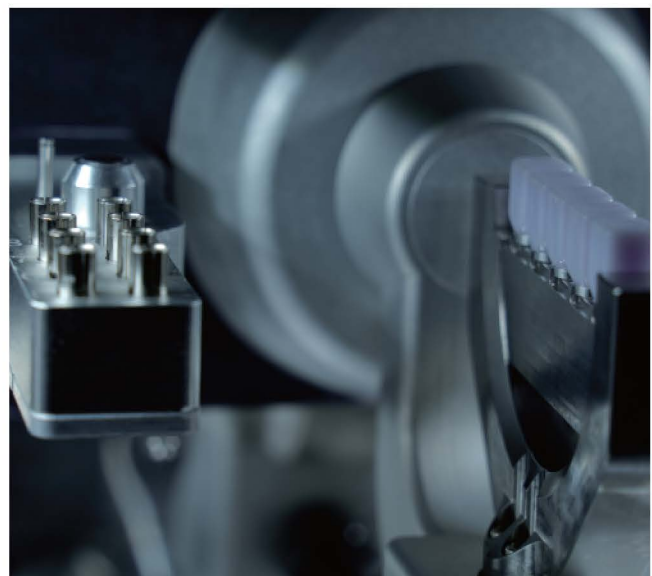
MW6 Five-axis Wet Milling Machine

- Five-axis linkage wet machining
- Automatic tool changer, 15 knives
- Glass ceramic, titanium pillar, titanium disc, Malong bridge



Amazing Milling Power

You can grind any dental materials, such as glass ceramics, titanium columns, Malone Bridge, etc.



MW6	Parameter	MW6	Parameter
Size	510*660*710MM	Electric machinery	Panasonic servo motor
Weight	125KG	Processing angle	A ±360°
Processing method	Wet milling		B -30° +90°
Number of axes	Five axis	Data transmission	USB, Ethernet
Machining precision	≤5μm	Spindle	60000RPM
Rated current frequency	50/60HZ		Liquid-cooling
Compressed air	0.6-0.8MPa		6MM clamp head
Number of cutting tools	15		2.5KW

Hlight-502 Vacuum Cleaner

Automatic dust removal double-station vacuum cleaner

Designed for dental clinics and denture processing, this product effectively filters production dust. It is compact, quiet, powerful, and features an embedded system for both network-connected and automatic operation, can be used on two milling machines simultaneously.



Parameter

Model	Hlight-502	Weight	28KG
Rated Voltage	220V	Subatmospheric Pressure	0.7KP
Rated Current	5A	Noise Decibel	72dB
Rated Power	1200W	Measure	48*42*60cm
Maximum Simultaneous Connections	2 units (standard milling machine)		

DENTAL SINTERING FURNACE



Sintering Furnace

- Quick Sintering
- Closed Hearth Design
- PID Intelligent Temperature Control



Advantage

High purity silicon carbon rod heating technology ensures uniform temperature inside the furnace.

Controllable output voltage greatly prolongs the service life of silicon carbide rods.

90mm oversized diameter tray capable of sintering up to 80 dentures.

Heat up to 1530 degrees Celsius in up to 20 minutes.

Parameter		Parameter	
Furnace Mode	Electric lifting furnace	Support Languages	English, Russian, Spanish, Chinese (extensible)
Furnace Size	90*70mm	Number of sintering curves	Article 50
Crucible Size	2 layers	Rated Power	3kw
Number of teeth that can be burned at one time	120 (60*2)	Suitable Voltage	210-240V (50HZ)
Heating Element	Elema	Net Weight	42kg
Number of heaters	4 Pieces	Machine Dimension	430*480*590mm
Heating Rate	0-200℃/min	Packing Size	470*530*800mm
Maximum Temperature	1550℃	Standard fittings	1 tray, 1 crucible, 1 package of zirconium beads, 1 manual.
Number of temperature control sections	Section 3		

Porcelain Furnace

- Electric Lifting Furnace
- Multilingual
- 10-20 Teeth Capacity



AI Temperature Control

- Heating Speed UP To 200°C/S
- Max Temperature in 1200°C
- Auto Calibration



Dentist Special Furnace

- 20-40 pcs Denture/90mm Tray
- Glazing in 20 mins



Parameter		Parameter	
Heating Rate	200°C/min	Maximum temperature holding time	Up to 2 hours and 46 minutes
Maximum Temperature	1200°C	Vacuum level setting standard	1-101%
Operating range	100-120V 50/60HZ 230V 50/60HZ	Electric current	14.5 A @110V 7.0 A @230V
Power	Max. 1500w (excluding vacuum pump)	Volume	30cm*39cm*55cm
Furnace core platform	9cm	Net weight	19kg
Weight include the package	23.5kg		

DENTAL 3D PRINTER



High-Precision Dental 3D Printer



HIGH PRECISION, HIGH EFFICIENCY

10.1 inch 12K printing screen 218X123mm printing format, Printing accuracy 0.019mm, 75mm/h Extreme speed printing.



INTELLIGENT CONTROL

Check and print at startup, without manual leveling. Intelligent constant temperature system, always keep the best printing temperature.



APPLICATION

It can be widely used in fixed restoration model, implant model, orthodontic model, implant guide plate, positioning guide plate, temporary crown, tooth base and other applications.



Product Parameter

Equipment size	360*300*510mm
Net weight of equipment	21kg
Packing size	455*400*765mm
Packing weight	22kg
Molding size	218*123*160mm
Pixel size	11520*5120
Dot per inch	0.019mm
Z axis accuracy	0.01mm
Technical type	Aperture technology of LCD
Layer thickness setting	0.015-0.15mm
Max. Print Speed	75mm/h

3D Printing Resin

Temporary Dental Resin

(Applicable industry: temporary dental restorations)

Performance: Typical Value

Appearance: A1,A2, commonly used colors in dentistry

Bending strength ASTM D790m: 29.5Mpa

Bending modulus ASTM D790m: 962Mpa

Hardness: 78



Prosthetic Model Resin

(applicable industries: all kinds of dental models, surgical guidance models)

Performance: Yellow, orange yellow

Appearance: A1,A2, commonly used colors in dentistry

Bending strength ASTM D790m: 29.5Mpa

Bending modulus ASTM D790m: 962Mpa

Hardness: 78



Orthodontic Bracket Positioning Is Suitable For Industries

(orthodontic guide plate, functional retainer, orthodontic accessories, implant template and X-ray guide plate)

Performance: Typical Value

Appearance: Translucent green liquid

Bending strength ASTM D790m: 29.5Mpa

Bending modulus ASTM D790m: 962Mpa

Hardness: 78



Light Curing Machine

Ultraviolet light can be adjusted from 0 to 0~6000Wuv;
Super energy 0 ~ 2800 MW/cm;

- Energy-saving led light
- Environment-friendly
- Radiation-free
- Anti-UV observation door
- Automatic induction switch



Ultrasonic Wave Cleaner



OTHER DENTAL CONSUMABLES



3D Pro

3D Pro Gradient Zirconia

Replicating the layered beauty and strength of nature in zirconia blocks.



Indications



crown



inlay



onlay



bridge



coping



veneers



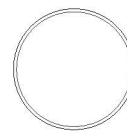
planting full crown



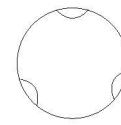
planting abutment

Performance Parameter

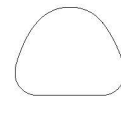
Colour	White / Vita colors / BL colors
Translucency	43%-57%
Density	≥6.0g/cm ³
Bending Strength	650-1200mpa
Fracture Toughness	5Mpa ^{1/2}
Hardness (Hv10)	1250



98mm



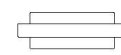
95mm



92x75mm



Sirona System



Other Specifications

Y2O3	5.5wt%-9.5wt%
Al2O3	0.05wt%
SiO2	≤0.002wt%
Fe2O3	≤0.002wt%
Aging Properties	Monoclinic Phase < 25%
Chemical Solubility	≤2000hg.cm ⁻²

• Translucency span • Bending strength span

57%



43%

≥650MPA



≥1200MPA

Colored Glaze Paste

- Colorful uniform
- The grain is fine
- It's easy to use
- Low temperature firing
- The application is simple
- Independent research and development
- The process is stable



Performance Parameter

Zirconia, glass ceramics, porcelain

Stain/Glaze

Dentine shade



Incisal shade



Pit and fissure shade



Adjustment shade



Gingival shade



Transparent shade



Glass-Ceramic

Lithium disilicate (LS2) glass-ceramic is ideally suitable for the fabrication of monolithic restorations or veneered restorations in the anterior and posterior region. Due to its natural-looking tooth colouring and excellent light-optical properties, Lithium disilicate produces impressive results.

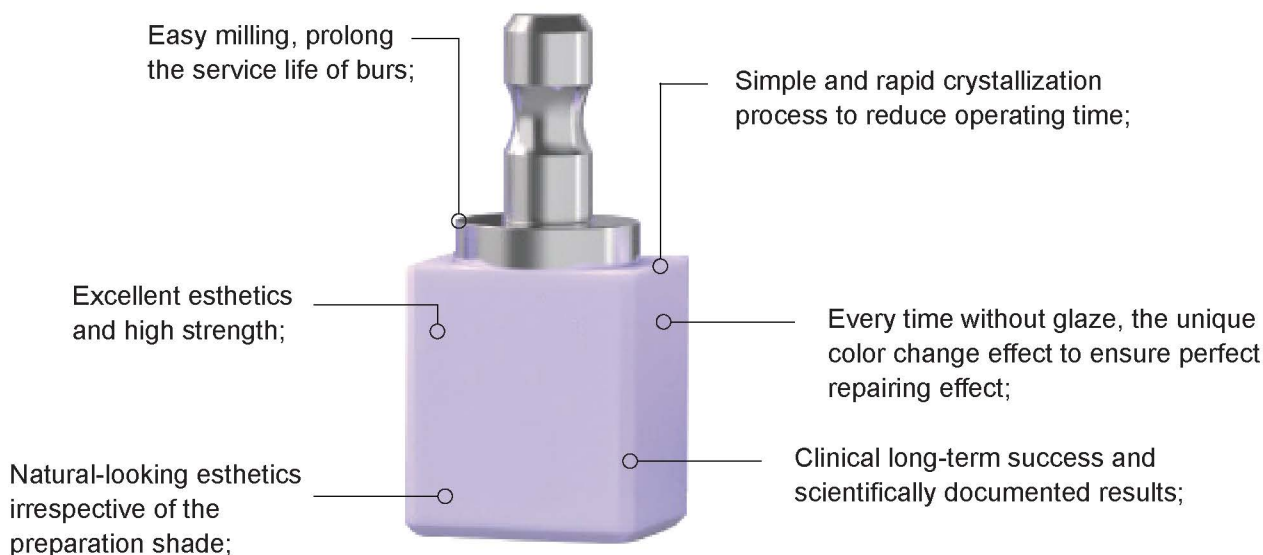


Specification classification

		Size	Translucency / Bending Strength
	C14	18*15*13	LT(400Mpa;39%) HT(370Mpa;45%)
	B40	40*15*15	

	BL color scheme	A color scheme	B color scheme	C color scheme	D color scheme
HT	BL1,BL2,BL3,BL4	A1,A2,A3,A3.5,A4	B1,B2,B3,B4	C1,C2,C3,C4	D2,D3,D4
LT	BL1,BL2,BL3,BL4	A1,A2,A3,A3.5,A4	B1,B2,B3,B4	C1,C2,C3,C4	D2,D3,D4
MT	BL1,BL2,BL3,BL4	A1,A2,A3,A3.5,A4	B1,B2,B3,B4	C1,C2,C3,C4	D2,D3,D4

Product Advantages



PEEK

PEEK is a high-performance polymer that has been used as an implant material in the field of human medicine for over 35 years, and can be applied in oral restoration and dental implantation. Its mechanical material properties are similar to those of bone materials, and it can perfectly blend with bones.



Performance Parameter

Density	1.32g/cm ³
Bending strength	163MPa
Module	four
Stamping strength	199KJ/m ²
Color	Regular, white, pink, yellow
Shrinkage	10mm/12mm/14mm/16mm/18mm/ 20mm/22mm/25mm/26mm/30mm
Size	98mm / 95mm

Indications:



crown



planting abutment



bridge

Product Characteristics

- Easy to mill
- Optimal shape stability
- Biocompatibility



Millable Dental PMMA Discs

PMMA discs are 100% high quality resin material for making of crown and bridges which serve as temporary restorations, modules or night-guard.



Performance Parameter

Type	Flexible PMMA, Multilayer PMMA, Normal PMMA
Color	Vita 16 color, BL1-BL4, clear, pink
Hardness	75-85 ° Shore
Melting point	240-270°C
Density	1:19
Ash	0.032%
Shrinkage	0.5%
Application	Dental CAD / CAM systems for resin plate, wax mold crown bridge denture prosthesis, temporary crown, night-guard etc.

Milling System	Dimension	Type	Color
Open CAD/CAM milling system	OD98*10-30mm	Flexible PMMA, Multilayer PMMA, Normal PMMA	Vita 16 color, BL1-BL4, clear, pink
Amann Girrbach CAD/CAM milling system	89*71*12mm-25mm	Flexible PMMA, Multilayer PMMA, Normal PMMA	Vita 16 color, BL1-BL4, clear, pink
Zirkonzahn CAD/CAM milling system	OD95*10mm-25mm	Flexible PMMA, Multilayer PMMA, Normal PMMA	Vita 16 color, BL1-BL4, clear, pink



CEDU3D

Whatsapp / Wecht: 0086 177 6706 3525

E-mail: wuyw@cedu3ddental.com

Address: Room 1402, 14th Floor, Fangtianxia Building,
No.82 Yueda Lane, Changhe Street, Binjiang District,
Hangzhou City, Zhejiang Province

Website: www.cedu3ddental.com