



Futureemirates

DENTAL  
SOLUTIONS

# ADVANCED PRICE GUIDE

---

- Precision for Professionals
- Defining Standards
- Innovation Without Compromise

20  
26

## Stay in Touch With Us



Office 304, Kasco Tower, Damascus St,  
Al Qusaia Ind.3, Dubai, UAE

---



[info@futuremirates.com](mailto:info@futuremirates.com)

---



+971 50 366 7285

---



[www.futuremirates.com](http://www.futuremirates.com)

Where Innovative Design  
Meets **STRAUMAN'S**  
Legacy of Precision.

AS200E



- Authentically Wireless
- 245 g Weight
- 4 Heads in 2 Size
- High Scan Speed
- Long Battery Life
- Spare Battery Included
- 10T Cloud Storage

₹ 35.900

SENSA



- AI-Powered Workflow
- 10m Wireless Range
- Super Battery Endurance
- Standby Time
- Shockproof Design
- Patient Engagement Tools
- Integrated Digital Ecosystem
- Accuracy 20µm

₹ 39.900

AS260

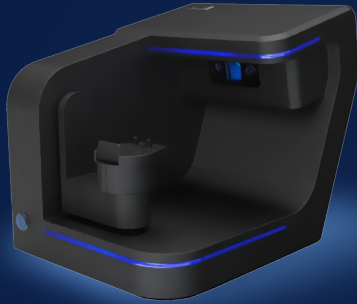


- 20µm Precise Arch Scanning
- 175g Super Light weight
- 18mm Depth of Field
- Improved Data Integrity
- Streamlined Design
- Calibration Free
- Shock Resistance
- Detachable Cable

₹ 24.900

Professional **Scanning** at a Small Cost.

**LS200+**



- 2.4MP\*2 Camera Resolution
- 11 kg Weight
- Exocad Integration
- 8 μm Accuracy
- AC110-240V, 50Hz Power Supply

₹ 27.900

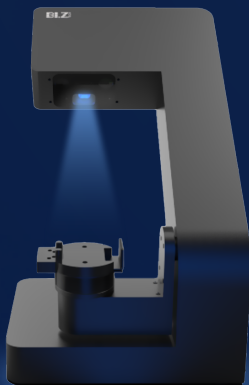
**INO200**



- 25mm Scan Depth
- 270 g Weight
- Powered by AI Tech
- Motion Control Support
- DC12V 2A Power Supply

₹ 14.500

**LS100**

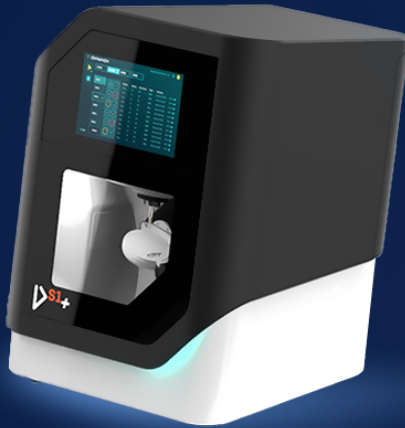


- 1.6MP \*2 Camera Resolution
- 7 kg Weight
- Color Texture
- 8μm Accuracy
- AC110-240V, 50Hz Power Supply

₹ 16.900

Where Authentic Design  
Meets **Italian** Precision.

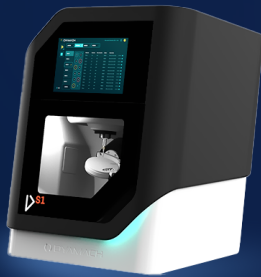
# DS1+



- 0.75Kw Spindle Power
- 65 kg Weight
- 100.000rpm Spindle Speed
- Dry/Wet Operation system
- Automatic Calibration
- Removable 14-Tool Rack

₪ 191.000

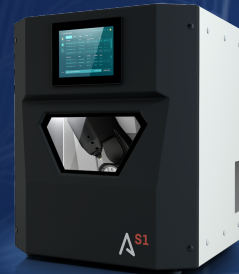
# DS1



- 0.75Kw Spindle Power
- 65 kg Weight
- 100.000rpm Spindle Speed
- Dry Operation system
- Automatic Calibration
- Removable 14-Tool Rack

₪ 159.900

# AS1



- 1Kw Spindle Power
- 300 kg Weight
- 60.000rpm Spindle Speed
- Dry/Wet Operation system
- Automatic Calibration
- Removable 18-Tool Rack

₪ 159.900

**Faster Cycles and flawless results.**



**ZTCF-30B CS**

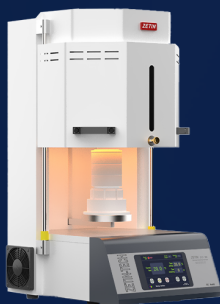
₹ 17.900

- 40 Built-in Programs
- 1- Hour Sintering Time
- 2Kw Power Output
- 1750°C Max.Temperature
- 60- Unit Program Capacity
- Integrated Touch Screen



**ZTCF-30B SIC**

₹ 22.000



**ZTCF-30B+**

₹ 16.900

- 3Kw Power Output
- 1560°C Max.Temperature
- 2.5- Hour Sintering Time
- 40 Built-in Programs
- 150- Unit Sintering Quantity
- Integrated Touch Screen



**ZTCF-30B FAST PRO**

₹ 18.900

Smart by **Design**, Fast in **Executive**.



## UBEE

- 198\*124\*188 mm Build Volume
- 34 μm XY Resolution
- 10 μm Max. Accuracy
- 34 kg Weight

₪ 22.000



## NBEE

- +100 Resin Compatible
- 10 μm Accuracy Up to 99.91%
- 5 μm Accuracy Up to 95.87%
- World Record Speed:  
6 Models in 5 Min

- 192\*120\*180 mm Build Volume
- 49.8 μm XY Resolution
- 10 μm Max. Accuracy
- 60 kg Weight

₪ 17.900

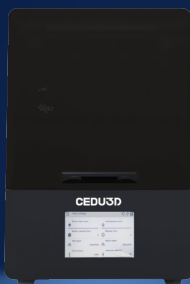
Unparalleled Speed

MLSA Printing Tech

10~200 μm Layer Thickness

## CEDU3D

T80



- LCD Printing Tech
- 150\*81\*128 mm Build Volume
- 1620\*2560 Resolution
- 12 kg weight
- 0.2 - 0.02 mm Layer Thickness
- 0.05 mm Max. Accuracy

₪ 16.900

T90



- LCD Printing Tech
- 219\*124\*190 mm Build Volume
- 7680\*4320 Resolution
- 27 kg weight
- 0.2 - 0.02 mm Layer Thickness
- 0.05 mm Max. Accuracy

₪ 18.900

Experience exceptional speed while maintaining outstanding accuracy.

C52 A



- 0.01/0.005 Accuracy
- 80 kg Weight
- 60.000rpm Spindle Speed
- Dry Operation system
- Aluminium Construction
- Removable 7-Tool Rack

₹ 64.900

C52



- 1.37Kw Spindle Power
- 122 kg Weight
- 80.000rpm Spindle Speed
- Dry/Wet Operation system
- Water Cooling Method
- Removable 16-Tool Rack

₹ 89.900

## Furance

ZIR2



- Precise Temperature Accuracy
- Up to 1600°C Sintering Temperature
- Fast & Standard Sintering Modes
- Intelligent Touchscreen Interface
- Universal Zirconia Compatibility
- Multiple Pre-Set Sintering Cycles
- Large-Capacity Chamber

₹ 64.900

# Digital Dentistry

From Scan to Smile  
A Seamless Journey

## Digital Impression

Capture highly accurate intraoral data in seconds, ensuring maximum patient comfort and eliminating traditional impressions.

## Intelligent Design (CAD)

Transform digital scans into flawless restorations using advanced 3D design software for perfect aesthetics and fit.

## Precision Manufacturing (CAM)

Bring digital designs to life with ultra-precise milling and 3D printing technologies, delivering consistent, high-quality results.

## Final Processing (Sintering & Crystallization)

Achieve ultimate strength, durability and natural translucency with state-of-the-art sintering and crystallization.

## Interactive Smart PDF



This digital catalogue is fully interactive  
Simply click on your desired product to access  
in-depth information and place your order

[www.futuremirates.com](http://www.futuremirates.com)