


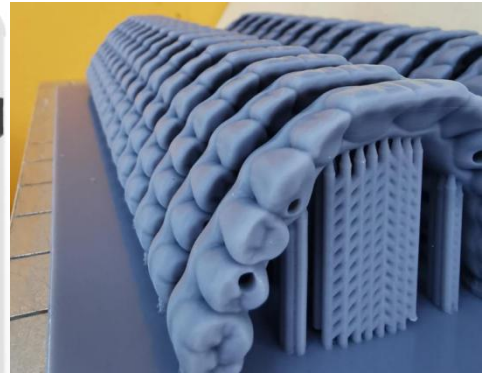



<b>L120 3D Printer Series Parameters</b>		
	<b>L120 Basic 3D Printer</b>	<b>L120 Pro 3D Printer</b>
<b>Picture</b>		
<b>Technology Type</b>	LCD (MSLA)	LCD (MSLA)
<b>Overall Size</b>	221*175*403mm	285*247*465mm
<b>Build Volume (X,Y,Z)</b>	120*68*150mm	120*68*150mm
<b>XY Resolution</b>	47μm	47μm
<b>Z Resolution</b>	10μm	10μm
<b>Layer Thickness</b>	0.025mm, 0.035mm, 0.05mm, 0.1mm	0.025mm, 0.035mm, 0.05mm, 0.1mm
<b>Minimum Hole Diameter</b>	0.3mm	0.3mm
<b>Minimum Wall Thickness</b>	0.2mm	0.2mm
<b>Printing Speed</b>	12-36mm/hr	12-36mm/hr
<b>Net Weight</b>	6.5kg	12.5kg
<b>Pattern Generation</b>	2K LCD panel(2560*1440 Pixel)	2K LCD panel(2560*1440Pixel)
<b>Light Source</b>	48W, 405nm, Purple LED	48W, 405nm, Purple LED
<b>Resin Tank (Resin Vat)</b>	FEP release film, aluminium alloy frame	FEP release film, aluminium alloy frame
<b>Supports</b>	Automatic and manual supports generation	Automatic and manual supports generation
<b>Input File</b>	STL./OBJ./SLC./DDEB./DDWP	STL./OBJ./SLC./DDEB./DDWP
<b>Connectivity</b>	Wifi/ Ethernet/ USB	Wifi/ Ethernet/ USB
<b>Offline Print Capability</b>	Yes	Yes
<b>Z-Axis Slide</b>	High-precision dual Z-Axis slides	High-precision dual Z-Axis slides
<b>Resins</b>	Dazz 3D resins, 3rd party resins compatible	Dazz 3D resins, 3rd party resins compatible
<b>Software</b>	DDStarter	DDStarter
<b>Systems Requirement</b>	Windows, Mac	Windows, Mac
<b>Touch Screen</b>	No	7 Inches full-color touch screen, 90° rotatable
<b>Power</b>	Input:100-240V 50-60Hz 2.5A Output: 24V DC 4A	Input:100-240V 50-60Hz 2.5A Output: 24V DC 4A
<b>Resin Fill System</b>	NO	Automated resin fill system (Easily replaceable)
<b>Air-purification System</b>	NO	Yes
<b>Sliding Peel Process with Wipe</b>	NO	Yes

### Dazzle L300 3D Printer Parameters

<b>Picture</b>	
<b>Printer Overall Size</b>	<b>567(L)*439(W)*702(H) mm</b>
<b>Build Volume ( Print Size )</b>	<b>293(L)*165(W)*300(H) mm</b>
<b>Printing Speed</b>	<b>12-36mm/hr, adjustable</b>
<b>Net Weight</b>	<b>45kg</b>
<b>Technology Type</b>	<b>LCD (MSLA) Stereolithography</b>
<b>Light Source</b>	<b>405nm, 260 Watt, parallel uniform UV LED light</b>
<b>Resolution</b>	<b>4K ( 3840*2160 pixels) LCD panel</b>
<b>Layer Thickness</b>	<b>0.025 / 0.035 / 0.05 / 0.1 mm</b>
<b>Precision</b>	<b>Z Axis: 10 microns , XY Axis: 76 microns</b>
<b>Z-Axis Slide</b>	<b>High-precision dual Z-Axis slides</b>
<b>Input Format</b>	<b>.STL/.OBJ/.SLC/.DDEP/ .DDWP</b>
<b>Cooling System</b>	<b>Streamlined water cooling system+Air cooling system</b>
<b>Resin Fill System</b>	<b>Automated resin fill system (Easily replaceable)</b>
<b>Air-purification System</b>	<b>Automated air-purification system</b>
<b>Connectivity</b>	<b>USB / Ethernet &amp; multi-user uplink for Wi-Fi</b>
<b>Screen</b>	<b>Smart 7 inches full-color touch screen, 90° rotatable</b>
<b>Software</b>	<b>DDStarter. One Software control multiple printers Easy to manage mass production</b>
<b>Systems Requirement</b>	<b>Windows, Mac</b>
<b>Supports</b>	<b>Automatic and manual supports generation (optional)</b>
<b>Resin</b>	<b>Dazzle resin, compatible with 3<sup>rd</sup> party resin.</b>
<b>Input Power</b>	<b>100-240V, 50-60Hz , 2A</b>
<b>Warranty</b>	<b>One year warranty, lifetime free technical support consult</b>



### Dazzle L140 3D Printer Parameters

<p><b>Printer Show</b></p>	
<p><b>Technology Type</b></p>	<p>LCD(MSLA)</p>
<p><b>Overall Size</b></p>	<p>285(L)*247(W)*465(H)mm</p>
<p><b>Net Weight</b></p>	<p>12kg</p>
<p><b>Build Volume (X,Y,Z)</b></p>	<p>140(L)*78(W)*150(H)mm(printing size is increased by 33.8%)</p>
<p><b>(X,Y,Z) Resolution</b></p>	<p>XY 54um, Z10um</p>
<p><b>Minimum Hole Diameter</b></p>	<p>0.3mm/0.2mm</p>
<p><b>Z-Axis Slide</b></p>	<p>High-precision dual Z-Axis slides</p>
<p><b>Printing Speed</b></p>	<p>12-48mm/hr</p>
<p><b>Light Source</b></p>	<p>48W, 405nm, Purple LED</p>
<p><b>Resin Tank</b></p>	<p>FEP Film, High-performance aluminum alloy frame</p>
<p><b>Platform</b></p>	<p>High-performance aluminum alloy, fixed and leveled by multiple screws, and quick-release forming platform</p>
<p><b>Supports</b></p>	<p>Automatic and manual supports generation</p>
<p><b>Resins</b></p>	<p>Dazz 3D resins, 3rd party resins compatible</p>
<p><b>Software</b></p>	<p>DD Starter</p>
<p><b>Input File</b></p>	<p>.STL/.OBJ/.SLC/.DDEB/.DDWP</p>
<p><b>Connectivity</b></p>	<p>USB &amp; multi-user uplink for Wi-Fi</p>
<p><b>Systems Requirement</b></p>	<p>Windows, Mac</p>
<p><b>Power</b></p>	<p>Input: 100-240V 50-60Hz 2.5A Output: 24V DC 4A</p>
<p><b>Layer Thickness</b></p>	<p>0.025mm, 0.035mm, 0.05mm, 0.1mm</p>
<p><b>Pattern Generation</b></p>	<p>2K LCD panel (2560*1440 Pixel)</p>
<p><b>Touch Screen</b></p>	<p>7 Inches full-color touch screen, 90° rotatable</p>
<p><b>Resin Fill System</b></p>	<p>Automated resin fill system (Easily replaceable)</p>
<p><b>Air-purification System</b></p>	<p>Yes</p>

## ■ Product Introduce

- Product Name: L140-3DPrinter
- Product Model: L140



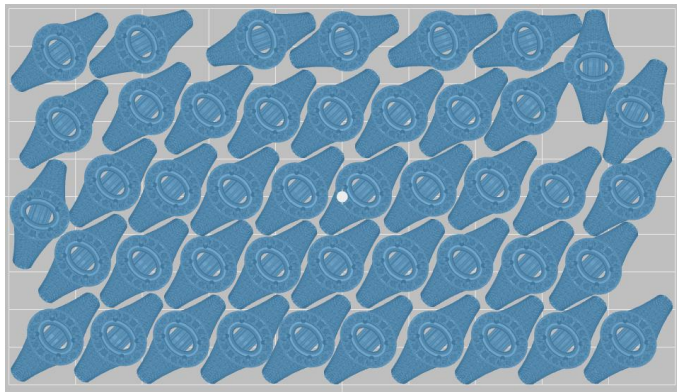
## ■ Advantage

- Larger build volume, greater freedom
- High printing accuracy and perfect molding details
- A complete range of printing materials and superior performance
- Autonomous software, user-friendly operation

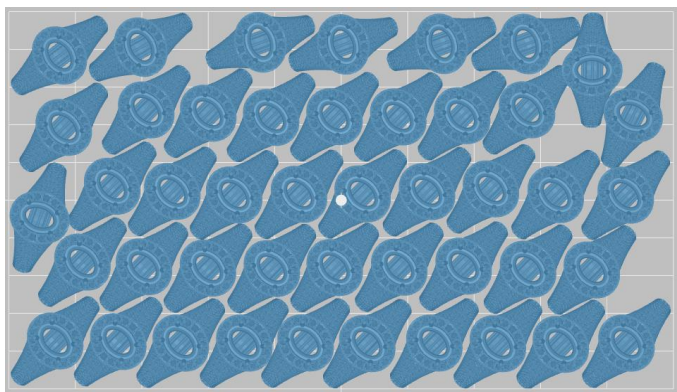
## ■ Application

- Jewelry      Industrial Design
- Education    Anime Design
- Dental

## ■ Jewelry Typography

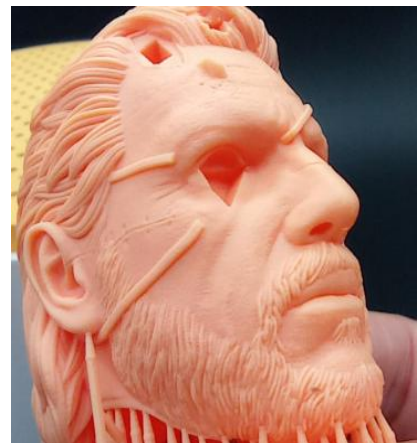
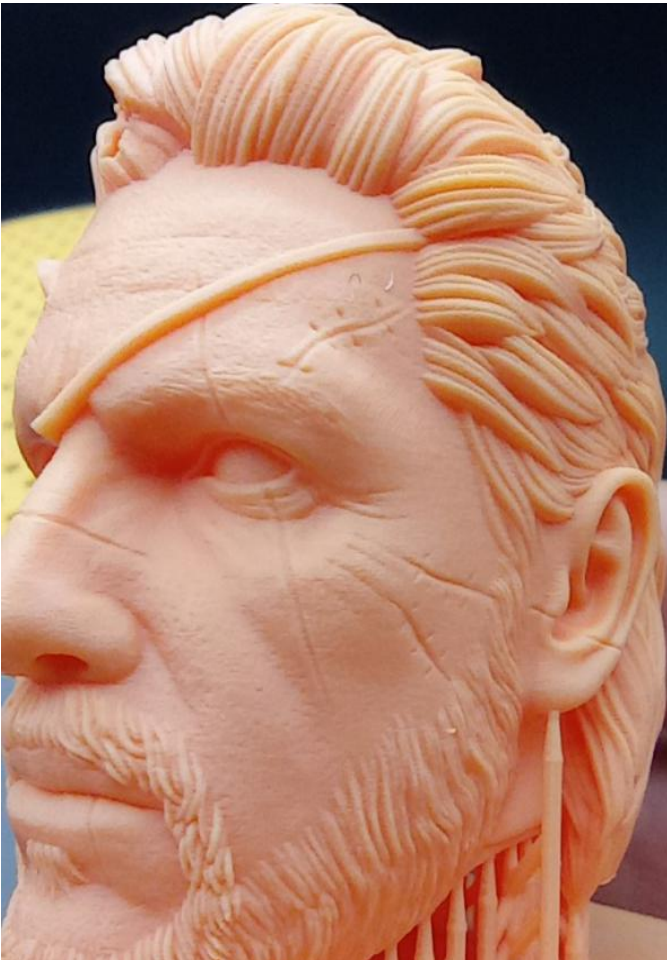


L140 sort (62 rings)




L120 sort (44 rings)

■ Work Shows

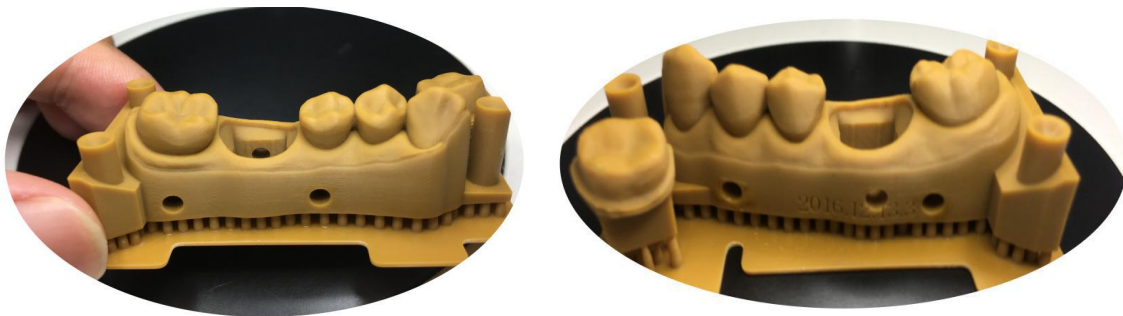


### Dazzle D100 3D Printer Parameters

<b>Printer Show</b>	
<b>Printer Size</b>	<b>Φ360*760mm</b>
<b>Build Volume</b>	<b>96*54*150mm</b>
<b>Light Source</b>	<b>Texas Instruments® industrial grade UV light engine</b>
<b>Wave Length</b>	<b>405nm</b>
<b>Light Source Resolution</b>	<b>1920*1080 pixels</b>
<b>Layer Thickness</b>	<b>0.025 / 0.035 / 0.05 / 0.1 mm</b>
<b>Z-Axis Precision</b>	<b>25 micron</b>
<b>Input Format</b>	<b>.STL/.OBJ/.SLC/.DAZZLE</b>
<b>Connectivity</b>	<b>USB &amp; multi-user uplink for Wi-Fi</b>
<b>Screen</b>	<b>Smart screen-touch system</b>
<b>Net Weight</b>	<b>22 KGS</b>
<b>Input Power</b>	<b>100-240V, 50-60Hz , 2A</b>
<b>Warranty</b>	<b>1 year, lifetime technical support</b>
<ul style="list-style-type: none"> <li>·Industrial grade UV light engine, lifespan 20000 hours.</li> <li>·Patented Software , Automatic supports Generation.</li> <li>·Wireless LAN connection enables the equipment be controlled remotely</li> <li>·Users could control multiple devices remotely through software and realize quantitative centralized management.</li> <li>·Dimensions compensation and fine tuning function bring ultra high precision printing.</li> <li>·Intelligent printing design achieves one-click printing without set first.</li> </ul>	



----Industrial grade UV light engine ensures stable and uniform illumination light source.



----The D100 is a perfect choice for producing real high accuracy models, and ensures outstanding surface finish.



----High quality output in the shortest time.

Layer: 0.025/0.035/0.05/0.1mm

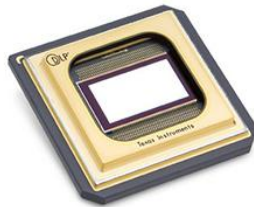
Speed: 8-33mm/hr, adjustable



----With double-guide rail design, the forming platform runs more smoothly.



-----No need for calibration on printing platform.  
Matt surface makes taking printed model out more easily.




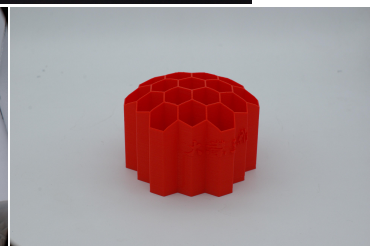
-----Utilizes the most expensive  
customized DMD chip from Texas  
Instruments®



-----All metal fuselage, excellent  
heat dissipation design ensures  
the equipment runs stably for  
long time.

### F255 3D Printer Parameters

<p><b>Picture</b></p>	
<p><b>Technology Type</b></p>	<p><b>FDM</b></p>
<p><b>Printer Overall Size</b></p>	<p><b>485*455*518mm</b></p>
<p><b>Build Volume (Print Size)</b></p>	<p><b>255*255*255mm</b></p>
<p><b>Structure</b></p>	<p><b>Gantry type</b></p>
<p><b>Net Weight</b></p>	<p><b>9.8kg</b></p>
<p><b>Print Material</b></p>	<p><b>PLA/TPU/PETG/ABS/Carbon Fiber</b></p>
<p><b>Package</b></p>	<p><b>Carton</b></p>
<p><b>Appearance</b></p>	<p><b>Integrated appearance, compact structure</b></p>
<p><b>Layer Thickness</b></p>	<p><b>0.05-0.3mm</b></p>
<p><b>Diameter of Material</b></p>	<p><b>1.75mm</b></p>
<p><b>Diameter of Nozzle</b></p>	<p><b>0.4mm</b></p>
<p><b>Precision</b></p>	<p><b>0.05mm</b></p>
<p><b>Printing Speed</b></p>	<p><b>10-175mm/s</b></p>
<p><b>Temperature of Nozzle</b></p>	<p><b>≥280°C</b></p>
<p><b>Pre-heat temperature</b></p>	<p><b>≥100°C</b></p>
<p><b>Electronically Controlled Drive</b></p>	<p><b>German TRINAMIC Silent Driver</b></p>
<p><b>Motor QTY</b></p>	<p><b>5Pcs (Z 2Pcs, X 1Pcs, Y 1Pcs, Extruder 1Pcs)</b></p>
<p><b>XY-Axis slide</b></p>	<p><b>Precise slide rail, synchronous belt pretension structure</b></p>
<p><b>Z-Axis slide:</b></p>	<p><b>Use double motor to drive double screw</b></p>
<p><b>Z-Axis slide guide wheel</b></p>	<p><b>Double axle with 8 POM bearing regulating wheels</b></p>
<p><b>Z-Axis slid sensor</b></p>	<p><b>Dual-axis photoelectric position sensor</b></p>
<p><b>Display</b></p>	<p><b>4.3 inch full-color touch screen</b></p>
<p><b>Parts processing</b></p>	<p><b>High precision CNC molding and surface oxidation</b></p>
<p><b>Power Outage</b></p>	<p><b>Resume printing after outages</b></p>
<p><b>Broken wire detection</b></p>	<p><b>Broken wire status sensor</b></p>
<p><b>Print Platform</b></p>	<p><b>Lattice glass heating plate</b></p>
<p><b>Connectivity</b></p>	<p><b>USB/SD Card</b></p>
<p><b>Input File</b></p>	<p><b>.STL/.OBJ/.AMF/.G-Code</b></p>
<p><b>Slicing software</b></p>	<p><b>Cura/Simplify3D/Slic3r/Prpetier-Host</b></p>
<p><b>Accessory Tool</b></p>	<p><b>Spatula, 2 Hexagon Wrenches, A Roll of Printing Material</b></p>
<p><b>Power Supply</b></p>	<p><b>3C Power 110/230V</b></p>
<p><b>Power</b></p>	<p><b>350W</b></p>



**Shenzhen Dazzle Laser Forming Technology Co., Ltd**

Rm K-2F, Building A, No.9 Zhongshanyuan Rd., Nanshan District, Shenzhen-China

Tel /WeChat/WhatsApp: +86-18520814727

Email: [jasminehong@dazzle-3d.com](mailto:jasminehong@dazzle-3d.com) Skype: [jasmine707404](https://www.skype.com/user/jasmine707404)

Web: [www.dazz-3d.com](http://www.dazz-3d.com)