

AFFORDABLE LUXURY

Configuration	S9
☆ Electrolytic Oxidized Disinfection System	√
Linkage compensation patient seat	√
5 in 1 Multifunction Tissue box	√
☆ Microfiber Leather upholstery	√
☆ Upgraded Headrest	√
☆ Silicone headrest cover	√
Floor-standing water unit box	√
Three memory positions	√
☆ Integrated PCB board	√
Soft start/stop system	√
Anti-collision system for backrest	√
Anti-collision system for spittoon	√
Silicone anti-slip armrest	√
☆ Matte Dust-Proof Foot Pad	√
☆ Ergonomically shaped Dentist stool	√
☆ RoLight 8 beads led dental light	√
Silent Round Pedal	√
☆ Four-Way Foot Control	√
☆ Stainless Steel Spiral Handpiece Tube	√
Stainless Steel 3-way syringe	√
Stainless steel spittoon handle	√
Removeable ceramic spittoon	√
Ceramic Filter Cover	√
☆ AirTac Air Regulator	√
☆ Transformer holder	√
☆ One-key water exchange	√
☆ Adjustable rinse water and cup filler	√
☆ Anti-Suction	√
SMC Air&Water Tube	√
☆ Nickel plated valve	√
Built-in scaler	△
Built-in curing light	△
Built-in micro motor	△
Intra oral camera and monitor	△

Upgrade " ☆ " Standard " √ " Optional " △ "



FOSHAN ROSON MEDICAL INSTRUMENTS CO.,LTD

Add: NO.9 Henggui Mid-Road, Lianhe, Industrial Zone, Luocun, Nanhai, Foshan, Guangdong Province.
Tel: +86-757-86407037 Web: www.fsrosen.com
Fax: +86-757-86407038 E-mail: Sales001@fsrosen.com



KLT-6220 **S9**
DENTAL UNIT

NEW upgrade S9

Smart design
Advanced experience
Multifunctional operation



Floor-standing chassis design

Enhances the stability of the operation

Makes chair motor longer lifetime



Leather upholstery

Elastic Skin-friendly Environmental Comfortable
Ultra-Breathable; Cosy; Environmental-friendly
As comfortable as sitting on a throne



Soft start/stop system

Keep patients always comfortable

Intelligent-Efficient-Safety

Assured safe operations

Automatically pause and return to a section when is blocked



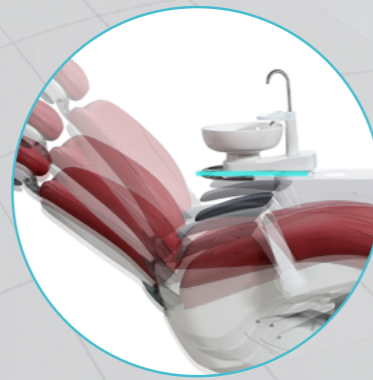
Anti-collision system for backrest

Chair Interlock system



Preventing accident during operation

Anti-collision system for spittoon



Patient seat and backrest automatically pause and return to a section when is block to the spittoon

EOW-- Electrolytic Oxidized Disinfection System

The water will be disinfected by intelligent microelectrolysis
Efficient disinfection; Safety priority

For dentists one-key switch & automatic disinfection
For patients non-toxic & no stimulation; convenient & safe
For dental chair corrosion resistance; long serving lifetime

Efficient disinfection

Disinfection Rate
≥ 99.9999%

Biofilm Inhibition

Prevention of cross infection

Non-toxic & No stimulation

Without chlorine disinfectant



Water quality adaptation

Electrolyte adaptation
Meet different water quality

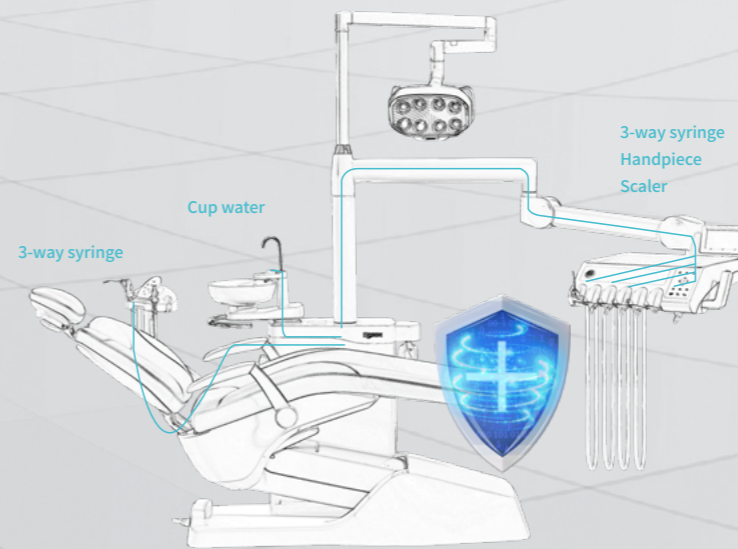
Environmentally-friendly

No harmful residues

Anti-corrosion to pipeline

No chloridion
No corrosion

Six Tests Authorized reports



Ingenuity shows in the details



Yellow



White



Illumination / Color temperature / Digital display



Yellow & white

Smiling face design dental light

Philips lamp beads
Stable illuminant, No RF interference, Eye protection
Surgery and Conventional treatment application
Comfortable for each treatment

Hygienic Spittoon

Rotatable removeable spittoon, easy to clean
With stainless steel rinse and supply pipe,
longer life hygienic stainless steel handle



Optimized for four-hand operation

Flexible swiveling and compact workflow assistant unit easy to reach, provide more space for assistant work closely with dentist and patient at all time.

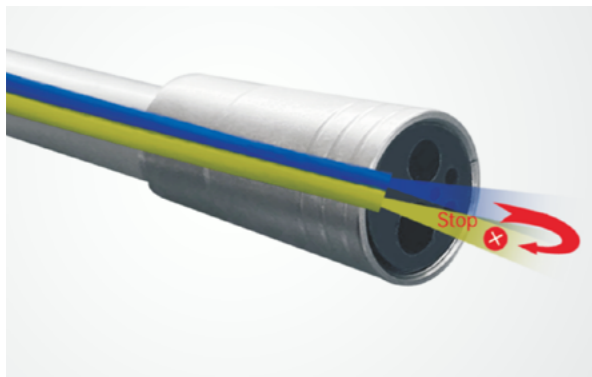


- ① 45° Bevel control panel
- ② Silicone pad easy to clean and disinfect
- ③ Sterilizable ergonomically handle

EFFICIENT & COMPACT WORKFLOW

Dentist table can be quickly positioned by ergonomically handle.
Compact workflow design ensures dentist reach instruments, table and touch panel with less time.
Preset 3 memory positions ease dentist's work every day.





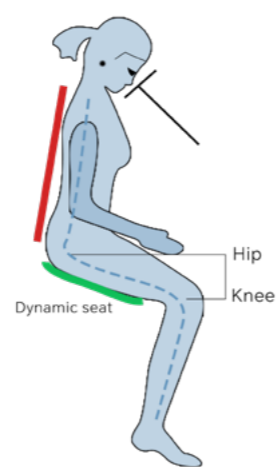
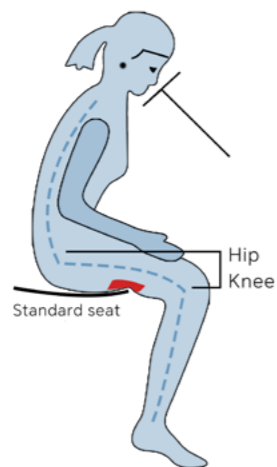
Anti-suction

Prevent water backflow
For Patient's safety



Silicone anti-slip armrest

Comfortable feeling,relieve patient's tension



5°

① Comfortable, Ultra-Breathable, Non-deformation
Multi-functional adjustment, 5° tilted forward, to maintain dentist a comfortable natural position when in surgery

② Aluminium alloy base, stable and steady

③ 360° switch silent casters, convenience and quiet.



RS06--Ergonomically shaped Dentist stool

Eight-way control, easy to master
Ergonomic chair, take care dentist.

Recommend color FS04 Begonia Red

Great flexibility-Exceptional comfort



Style customized



Standard



Top mounted



Trolley style

Color

Microfiber Leather upholstery
Choose your favorite



FS01
Modern brown



FS02
Coloured glaze blue



FS03
Gray



FS04
Begonia red



FS05
Hermes orange



FS06
Olive green



FS07
Tiffany blue



FS08
Light green