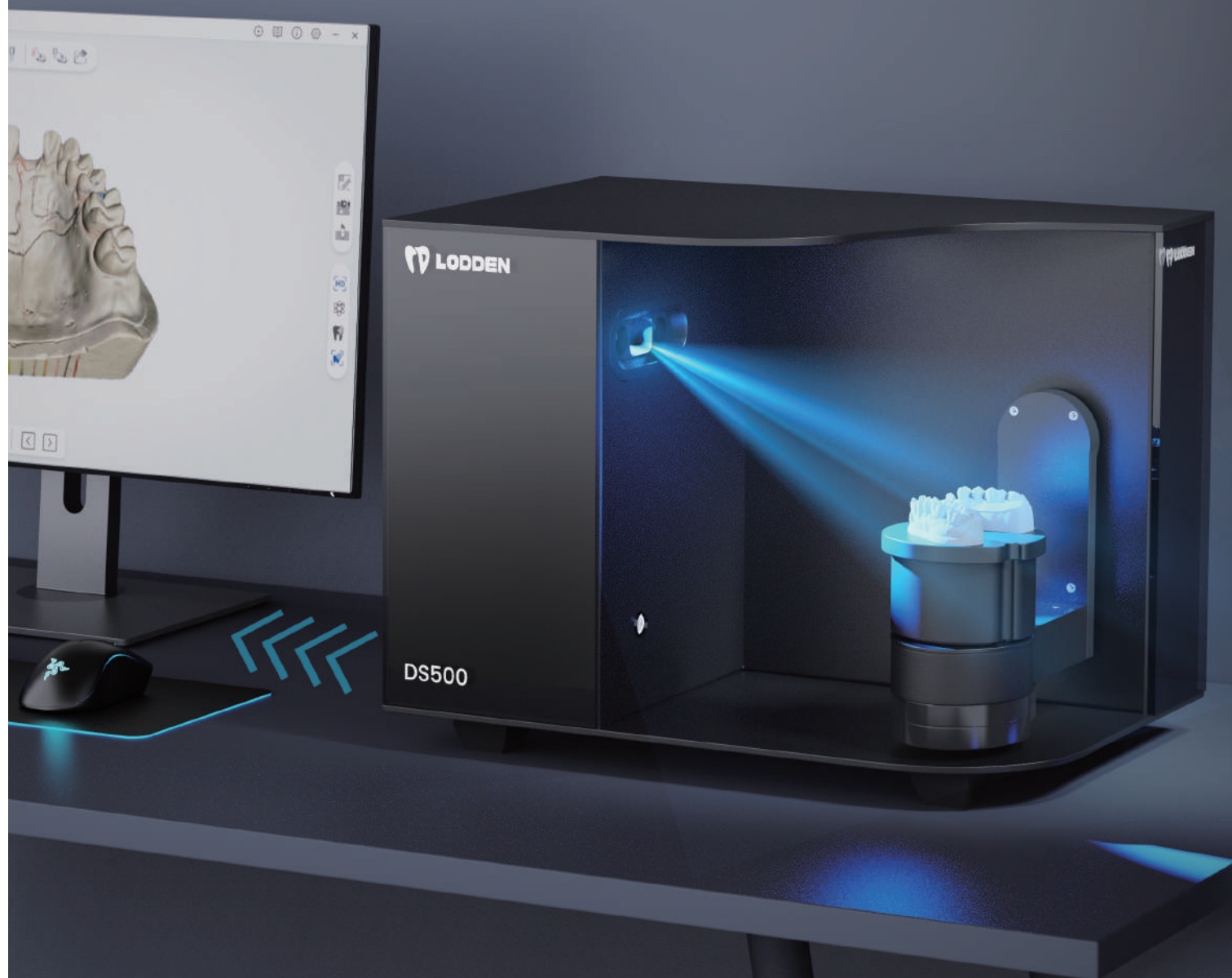




Desktop Scanner



Shenzhen Lodden Medical Technology Co., Ltd.
1601, No. 3031, Taibai Road, Luohu District, Shenzhen 518000, Guangdong, P.R. China

 +86-19026343954

 www.loddendental.com

 www.youtube.com/@loddental

 www.tiktok.com/@loddentalmedical

DS500



Camera Resolution:
2*5.0MP

Accuracy:
≤5μm(ISO12836)

FULL Arch Scan Speed:
13s

**FULL Arch Impression Scan
Speed:**
29s

DS300



Camera Resolution:
2*3.0MP

Accuracy:
≤5μm(ISO12836)

FULL Arch Scan Speed:
13s

**FULL Arch Impression Scan
Speed:**
29s

DS130



Camera Resolution:
2*1.3MP

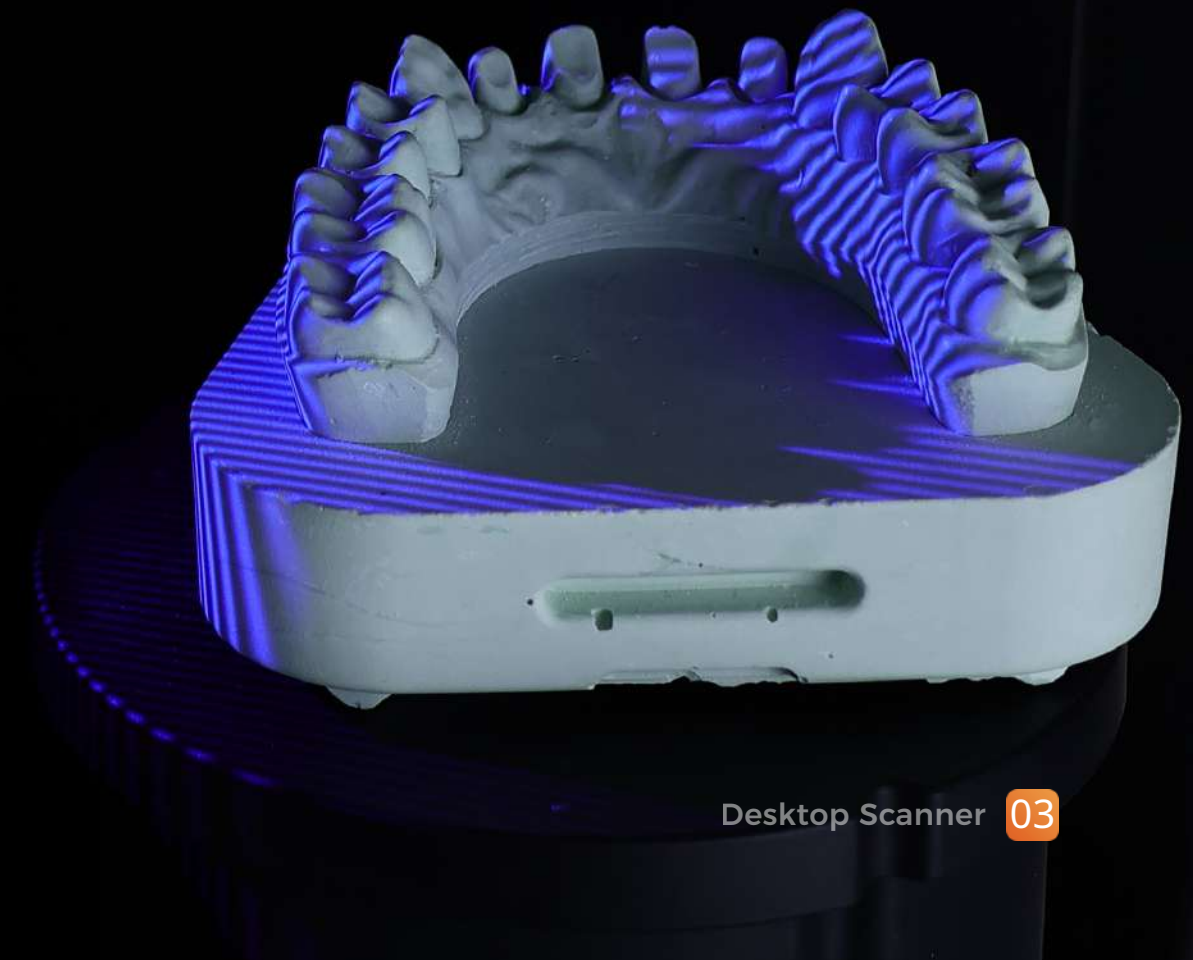
Accuracy:
≤7μm(ISO12836)

FULL Arch Scan Speed:
11s

**FULL Arch Impression Scan
Speed:**
27s

Focus on dental 3D scanning

Grand launch of a series of dental 3D scanners. Ingenious design, with excellent performance to meet the efficiency and precision needs of technicians in all scenarios.



Why Lodden DS-series ?

It's your first choice

Humanized design

Semi-open structure, prevent inter-ferece ,convenient operation
The button is positioned in the front for easy switching.

Open system

Support STL, PLY, OBJ data formats; Compatible with mainstream CAD software.

Most cost-efficient

Do more with less.
The first choice to get a scanner.

wide application

Restorations orthodontics and otherscenarios.Support stone,impression wax,texture, articulator and other types.

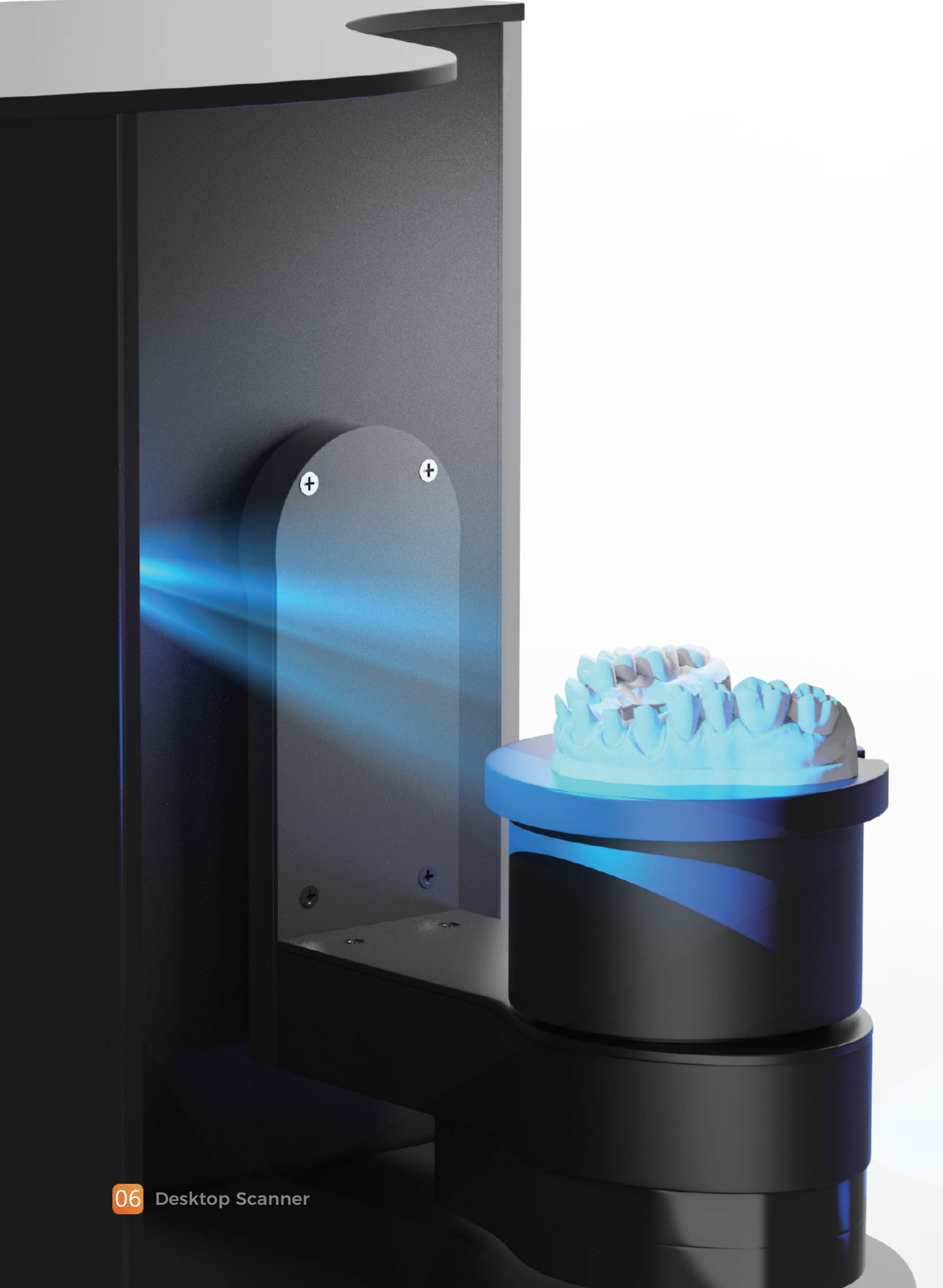
Professional team

A senior R&D team with more than 10years of dental industry experience.

Super performance

Fast speed and high precision.
Almost no post-processing time.



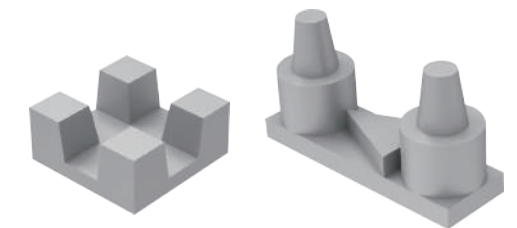


Fast Scanning

5S	11S	27S	12S	20S
Occlusion	Full arch	Impression	1-4 dies	5-8 dies

High Precision

According to the ISO-12836 test sample evaluation procedure the equipment accuracy was obtained.
DS130:<7μm DS300:<5μm



Excellent Details

The 2*3.0MP high pixel camera allows DS300 to have more excellent details and scanning performance, comparable to other brands of 5.0MP pixel products.



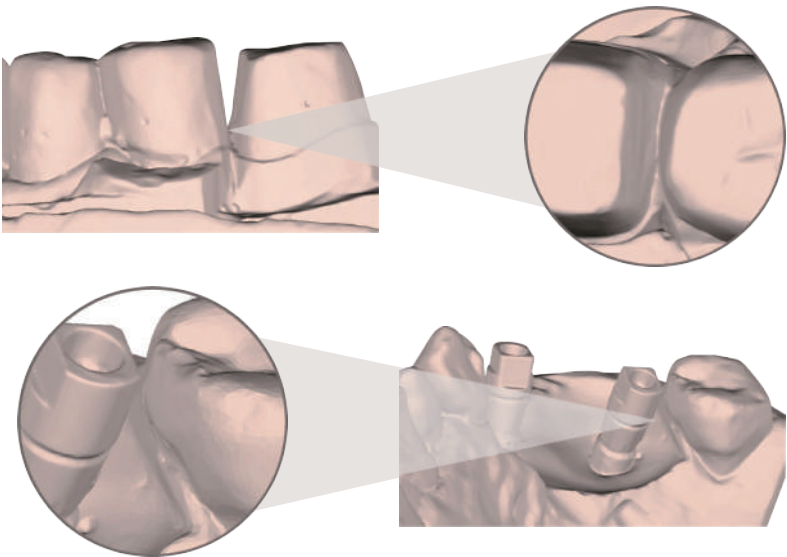
Articulator Scanning

The articulator scanning mode supports multiple types of articulator scanning, supports static and dynamic scanning switching of the articulator and meets a variety of scanning needs. The dynamic articulator scanning mode scans the entire buccal surface occlusion to improve the accuracy of alignment.



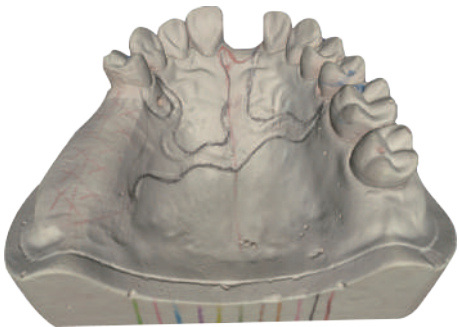
Intelligently Add Scan

The intelligent scanning mode of L series can adjust the scanning angle according to the hole area. With the help of multi-mesh hybrid 3D reconstruction algorithm, the missing areas of data were scanned better and more completely, and the efficiency of supplementary scanning and the integrity of model data were improved.



True Color Texture

With the help of color restoration technology DS130 can obtain high saturation and high color brightness of the true model color acquisition by using the mono camera, and capturing every inch of color details making the model more realistic.



DS300-More Professional Implant Scanner

The high pixel camera makes the DS300 more accurate which can easily capture the edge details of the abutment and the characteristics of the scanning. It can be widely used in abutment, scanbody, bridges and other common implant types, making it more professional.



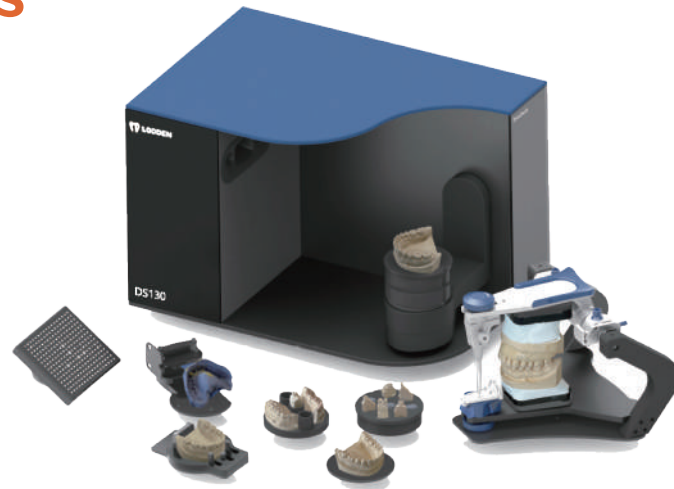
Flexible Workflow

The brand-new software interface covers various common tools, the process can be switched freely and the operation is simple and convenient.



Various Scan Types

Support stone, impression, wax, texture, articulator and other types.



Advantages

Whole functions & flexible workflow

01

- 1.Support various scan mode & model types.
- 2.Support dynamic & static articulator scan.
- 3.Switch the workflow freely.
- 4.Support articulator transfer and virtual simulation on EXOCAD.

No need for physical dongle

02

- 1.Electronic authorization and no need to send physical doongle.
- 2.Never have to worry about losing or damaging your dongle.

Fast and less time for post-process

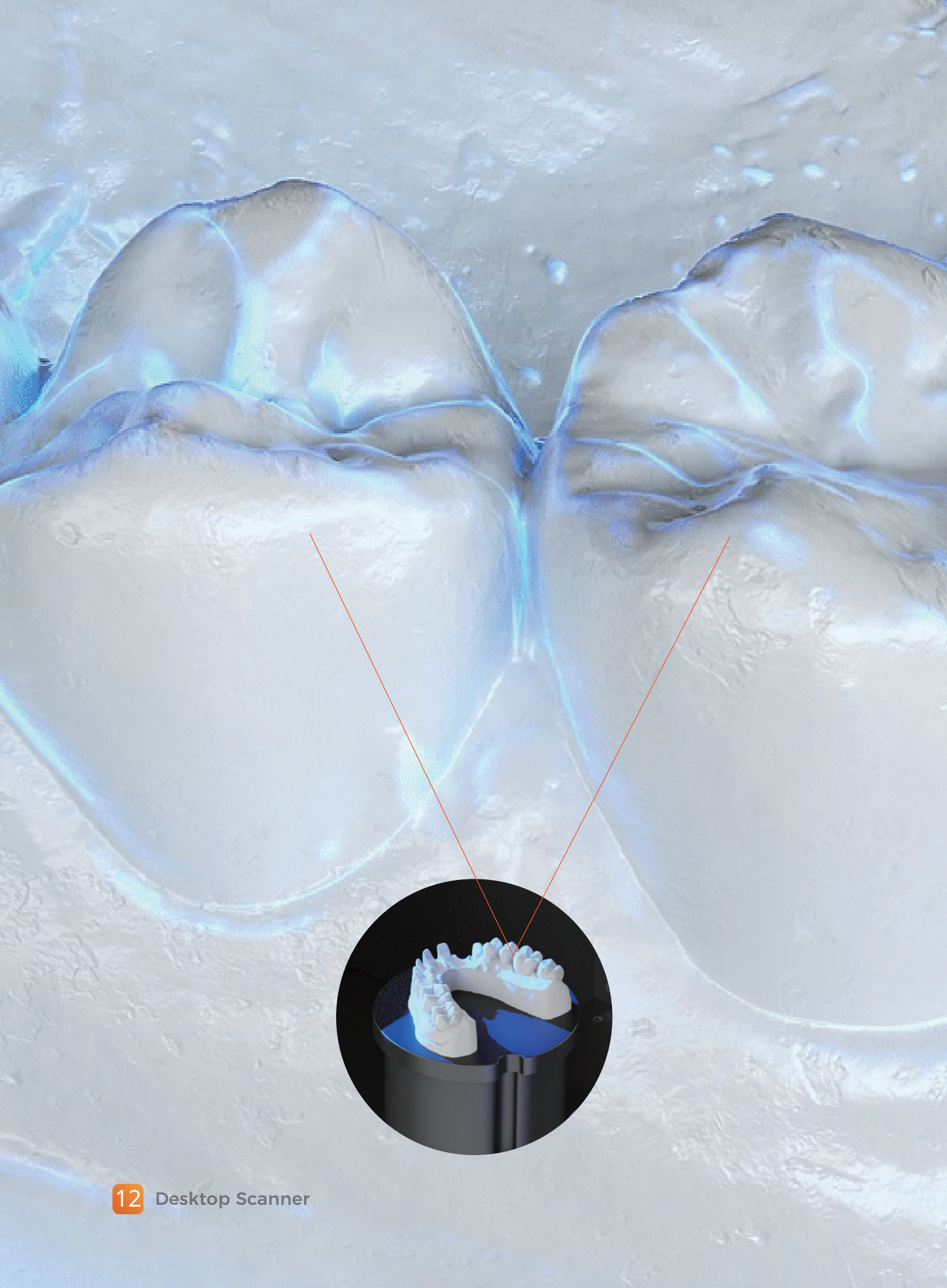
03

- 1.Fast and smooth scanning.
- 2.Less post-processing time.
- 3.At least 45% efficiency increased.

Very stable & less problem

04

- 1.Sold over one year and no broken issues.
- 2.Very few problems need to solve.
- 3.Almost all clients are very happy to use it.



Technical Parameters



Cetegory	DS130	DS300	DS500
Camera Resolution	2*1.3MP	2*3.0MP	2*5.0MP
Accuracy	≤7μm (ISO12836)	≤5μm (ISO12836)	≤5μm (ISO12836)
Full Arch Scan Speed	11s	13s	13s
Full Arch Impression Scan Speed	27s	29s	29s
Scan Area	106mm*84mm*60mm	94mm*89mm*60mm	94mm*89mm*60mm
Output Format	STL, PLY, OBJ		
Light Source	Blue Light		
Texture Scanning	True Colour Scanning		
Dimension	393mm*271mm*274mm		
Weight	9Kg		
Power Supply	DC 24V		
Interface	USB 3.0		
Articulator Scan	Dynamic / Static; Support Articulator Transfer		