



AS 100

Intraoral Scanner



Essentially Powerful

The AS 100 intraoral scanner changes your preconception of essential models by introducing ground-breaking, industry first features like Calibration Free design, incorporating top-notch scanning precision yet stays stunningly accessible.

An effortless choice to enter digital dentistry.



ScanPro

ScanPro offers essential functions in a user-friendly interface. With a range of tools at your disposal, including occlusal space check, undercut detection, and distance measurement, you can easily acquire and edit digital impressions and send them to labs with confidence.



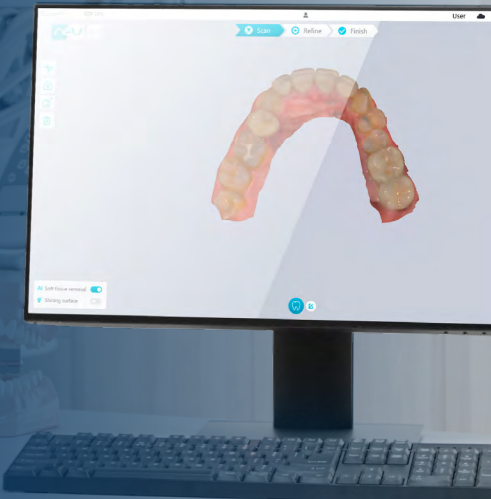
Intuitive and Versatile workflow

ScanPro's intuitive and versatile workflow allows you to start scanning right away and change your approach at any time.



True tone capture

Highly advanced algorithms contribute to colors that are true to life. Your digital impressions are as accurate as possible and closely matches the patient's natural teeth.



Calibration Free

The FIRST scanner in the industry that eliminates the need for accuracy and shade calibration.



Compact Design

Remarkably compact size and 198g lightweight design make it easy to maneuver in your hands.



Impeccable Precision

20µm accuracy in full arch scanning.



Fast Scanning

Complete a full-arch scan within 20 seconds.



Duo Scan Buttons

Simply rotate your device and use your regular finger to proceed with scanning.



Remote Control

Enjoy a seamless experience and a more hygienic workflow from beginning to end without having to touch the computer.



Powered by Single USB Connector



No Pre-Heating or Powder Required

Expanding Platform

Further expand your capabilities with free storage space, patient management, model review and export functions and more. We are rapidly expanding our collaboration with industry partners. More and more dental clinic, lab, and manufacturer are joining this vibrant community so you can realize the best potential.



Patient Engagement

Utilize digital impressions to visually captivate your patients, provide clear insight into clinical conditions, and advocate for your treatment plan.



Case Management

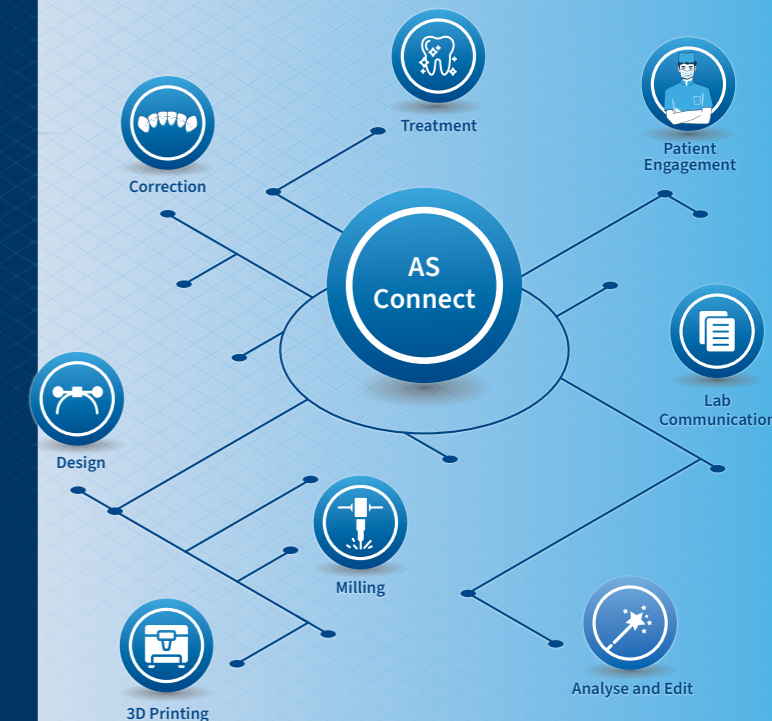
Manage patient information and review earlier cases.



Dashboard and Analytics



Free Base Storage & Data Transfer



Specifications

Handpiece	Dimensions	219 x 46 x 36 mm	Tip	Size	22 x 18 mm (L) 18.6 x 16.7 mm (S)
	Weight	198g		Remote Control	Yes
Scanning	Full-arch Accuracy	20 μ m			Calibration
	Field of View	16 x 14 mm (L) 12 x 12 mm (S)			
	Capture Button	Duo buttons			
Power Adaptor	Not needed				

About Alliedstar

Founded in 2019, Shanghai, Alliedstar Medical Equipment Co., Ltd. focus on digital dentistry and imaging solutions. The core founding members came from the industry with profound understanding and know-hows.

Our aim is to provide world-class products with exceptional quality and reliability to help dentist providing better care and build more smiles.



Contacts

Headquarter

Room 138, Building C
No. 2305, Zuchongzhi Road
Pudong, Shanghai, China

Sales inquiry

sales@allied-star.com

Distributor

